

# Dramatic

DRAMA NEW ZEALAND NEWSLETTER

#44: February 2022



In this issue: A call for presenters at Conference 2022, meet Life Member Lisa Simpson, an update on Secondary Mentorship, Primary Corner, Save the Date for our AGM, more on our PCT Networking Group, a call for renewals, and more!

Dramatic is proudly brought to you by:



# Note From The Pres.

Welcome to 2022... I really hope you all had a fab summer and made the most of the amazing weather and time to recharge.

I hope that last week brought good news with results out for both NCEA and IB, and I wish the HODs out there all the best as you write your annual reports.

Perhaps jump onto our advocacy tab on our website for any wording to help push Drama in your report.

Now the elephant in the room...

Who would have thought we would be returning to school in Red at the start of not only another Covid outbreak... but one that is harder and stronger which sees schools having more restrictions placed on them.

Pleased be assured that as an association we are following the news and updates and will keep you updated as we walk this journey together.

So I am sending bundles of energy and love to you all for your annual start up.

Kia kaha,  
Emma



## 2021 Executive Committee

### PRESIDENT

Emma Bishop  
[President@drama.org.nz](mailto:President@drama.org.nz)

### VICE PRESIDENT

Annette Thomson  
[VicePresident@drama.org.nz](mailto:VicePresident@drama.org.nz)

### SECRETARY

Nick Meissel  
[Secretary@drama.org.nz](mailto:Secretary@drama.org.nz)

### TREASURER

Cory Hare  
[Treasurer@drama.org.nz](mailto:Treasurer@drama.org.nz)

### PRIMARY REP

Judy Norton  
[Primary@drama.org.nz](mailto:Primary@drama.org.nz)

Charles Bisley  
[CharlesBisley@drama.org.nz](mailto:CharlesBisley@drama.org.nz)

Samantha Wehipeihana  
[SamanthaWehipeihana@drama.org.nz](mailto:SamanthaWehipeihana@drama.org.nz)

Chelsea Cope  
[Marketing@drama.org.nz](mailto:Marketing@drama.org.nz)

## Contact us

Email  
[Admin@drama.org.nz](mailto:Admin@drama.org.nz)

Conference Committee  
[conference22@drama.org.nz](mailto:conference22@drama.org.nz)

Mentorship Program  
[Mentorship@drama.org.nz](mailto:Mentorship@drama.org.nz)

National FB  
<https://www.facebook.com/DramaNewZealand/>

Primary Edition FB  
<https://www.facebook.com/dramanzprimary/>

Instagram  
[@drama\\_nz](https://www.instagram.com/drama_nz)

# Call for Presenters at Conference 2022

## Share your mahi and special skills with Aotearoa drama teachers. Make a presentation at Conference!

This year's theme, Tīmatanga Hōu, examines a fresh new start within the arts as we negotiate education during and beyond the pandemic, beginning with our new curriculum. Our logo represents our experience as a collective group, nurturing the new. Our conference will focus on:

- 🌀 The curriculum review and NCEA rewrite
- 🌀 Mātauranga Māori and cultural contexts
- 🌀 Recreating ourselves in a Post-COVID world
- 🌀 The weaving together of arts with health and wellbeing aspects to function well as arts educators



## Applications are now open!

The conference committee is open to traditional and alternate presentation ideas and formats. Some recommended formats may include:

- 🌀 60 minute or 90 minute workshops - Usually a practical workshop (we can discuss a double session if needed)
- 🌀 30 min paper - 20 minutes talk with 10 min Q&A (Usually a traditional paper delivery.)
- 🌀 Pecha kucha - 20x20 presentation format - 20 chosen images each for 20 seconds (you have 7mins to tell your story)
- 🌀 Panel discussion

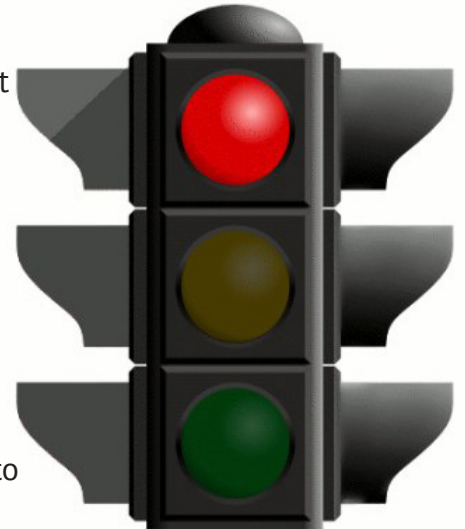
**Applications will close on 13th February. Please [Click HERE](#) to Apply.**

# COVID Update

Please be assured that your association is watching, listening, and advocating on your behalf to ensure your return to face to face in Red is in some way made easier. Remember to reach out for support or guidance in relation to both curricular matters and cocurricular.

As we are all aware, we are now at Alert Level Red. Some of our Drama NZ whānua in Tāmaki Makaurau have already experienced the Red Light level before, but for those who have not, we have collated information from MOE, MTNZ, ETNZ and MBiE based on FAQ's we have received, which you will find on the next page.

Today the Education Gazette was issued which is, as teachers, our main source of information regarding teaching during Covid-19. We highly recommend that you take a detailed look at today's gazette to familiarise yourself with the guidelines and recommendations they have provided. Please find the link to today's gazette here: <https://mailchi.mp/education/covid19-update-25-jan>



We hope that this answers some of your questions and concerns around teaching at Red. We will continue to provide information as it becomes readily available. Individual schools will also have their own plans and guidelines in place, so please always ask your school first. If you have any questions that we have not answered today, or your school cannot answer them, please reach out and we will do our best to find the appropriate information for you.

Lastly, the most important thing to do is to focus on our tamariki and ourselves. The first term of school is always the most important time to build rapport, especially in these uncertain times. Remember to also be kind to yourself, ask for help and reach out to your Drama NZ whānau - we are always here.

## **For your reference:**

**MOE:** <https://www.education.govt.nz/covid-19/advice-for-schoolskura>

**MTNZ:** <http://www.mtnz.org.nz/covid-19-resources>

**ETNZ:** <https://etnz.org/covid-19-resources-and-information/>

**MBiE:** <https://www.business.govt.nz/covid-19/managing-the-impact-of-covid-19-cases-at-your-business/>

# COVID FAQ's

## **1. If students are fully vaccinated, can they do a performance in school without masks and with an audience?**

A: Yes, if a My vaccine pass policy is in place and EVERYONE involved is fully vaccinated you can have an audience. Performing without masks depends on distance from the audience - the business mandate from government states performers do not need to wear masks. Although, in red the ministry have mandated no singing or dancing indoors so this may rule out the ability to perform

## **2. What is the difference between a school show where cast and crew are fully vaccinated, and a community show where cast and crew are fully vaccinated?**

A: There is no difference.

## **3. Can we as teachers legally ask students to get vaccinated for shows - do they perform with masks/do they get to perform at all/do they perform separately?**

A: Legally, no you cannot ask a student to be vaccinated, but you can state that the government mandate is that all students in a school production that is open to the public and selling tickets at levels red and orange require a my vaccine pass to be able to go ahead and to allow them to be in the show.

Regarding performing separately etc, there is a difference between productions and assessments. Assessments with an audience of teachers and classmates does not require a vaccine pass as its curriculum and not classed as an event until you invite or have it open to people outside of the students and staff of school.

## **4. Can we livestream shows?**

A: Some shows have livestream rights - you will need to contact rights holders and ask, you cannot just live stream. Live Streaming is also extremely expensive!

## **5. How can we best keep our tamariki safe during lessons?**

A: Distancing, hand washing, sanitiser, ventilation, masks, cleaning of touch surfaces and high use areas regularly.

## **6. What is the best way to approach classes and rehearsals where singing and dancing are happening?**

A: At the traffic light level Red, there is to be no singing or dancing indoors. Therefore, all rehearsals need to happen outdoors, wearing masks and socially distanced. Our best advice at this moment in time is to try to delay performances until later in the year and use the first part of the year as a time to solidify the foundations of your learning for the year ahead.

## **7. Can external/touring theatre groups still go into schools to perform?**

A: You must double check with each individual school what their policies and procedures are around this.

Connect at Conference 2022  
with a Trade Display



## Tīmatanga Hōu

*new beginnings*  
CONFERENCE 2022

JOHN MCGLASHAN COLLEGE  
ŌTEPOTI | DUNEDIN 8,9,10 JULY



### **About Conference Expo**

The Conference Trade Expo is located in the centre of the conference, along with registrations, and is where breaks normally occur. The EXPO provides a superb way to promote your products and services to proven buyers and network with a number of kaiako and education whānau from around Aotearoa.

In advance of the conference, we will be promoting your company in our newsletter and direct email about the conference, maximising your brand placement with Drama NZ members. If you would like to include a flyer, resource, or asset to be included in delegate packs, just let us know.

### **Pricing and Options**

#### **Manned Display**

Be there in person to visit with customers and expand your reach. The exhibitor fee includes: drinks and nibbles Friday evening; morning tea, lunch and afternoon tea Saturday; morning tea and lunch Sunday for one staff member. Donated goods and / or services may be accepted in lieu of monetary payment. Please get in touch if you have something to offer.

\$175 for current Associate Members

\$250 for non-Members

\$325 includes your annual Associate Membership or Renewal

#### **Additional Options**

\$100 per additional staff member

\$60 for Conference Dinner Saturday evening, per staff member

#### **Un-manned Display**

Unable to attend in person? You can still be represented via an un-manned table set up and kept organised by our conference team throughout the conference.

\$100 for current Associate Members

\$150 for non-Members

\$250 includes your annual Associate Membership or Renewal

**Find out more about Associate Membership:**

<https://www.drama.org.nz/associate-members>

Email [conference22@drama.org.nz](mailto:conference22@drama.org.nz)  
To Reserve Your Spot Today!

# Canterbury Branch.

Welcome back to all Canterbury members. What a wonderfully warm and sunny summer we are having. Temperatures in Canterbury, top of the South and Westland have soared and many of us have taken the opportunity to explore our lovely region and the rest of NZ too. This is a time for families to connect, and happily we have been able to travel around the country to see family and friends not seen for most of 2021. May 2022 prove to be positive and a year of connection, learning, and celebration of our awesome tamariki and rangatahi!



Plans for 2022 are afoot and more details will be coming soon. Firstly, there is a workshop aimed at primary teachers planned for early in the year:

## ***Drama in Your Literacy Programme***

Wednesday 02 March, 3.30pm – 4.45pm (tbc)

St Andrew's College

Register your interest with Ginnie Thorner [gth@stac.school.nz](mailto:gth@stac.school.nz)

Ginnie is also available to visit teachers in Christchurch at their school for 1:1 planning or model teaching if they are interested.

As the new Regional Rep, I plan to visit some of the outlying areas of the Canterbury region. Members in Marlborough, Golden Bay and on the West Coast can expect me to contact them soon to arrange a visit and possible workshops.

The national Drama NZ conference is in Dunedin this year - a wonderful opportunity for South Island members to attend without having to travel too far (mostly). We would like to encourage you to apply to be a presenter if you have ideas, units of work or interesting approaches to drama teaching and education that you could share. If you have not presented before and are feeling unsure, there is support available. Both [Annette Thomson](#) and I can help.

Please let us know if there is anything you need support with. You can contact:

President: Jay Grubb [grj@papanui.school.nz](mailto:grj@papanui.school.nz)

Secretary: Samantha Boyce Da-Cruz [bdc@linwoodcollege.school.nz](mailto:bdc@linwoodcollege.school.nz)

Regional Rep: Verity Davidson [verity.davidson@nayland.school.nz](mailto:verity.davidson@nayland.school.nz)

Primary Rep: Ginnie Thorner [gth@stac.school.nz](mailto:gth@stac.school.nz)

**Verity Davidson**

**Regional Liaison and Support  
Canterbury Branch**

***Canterbury Branch Info***

**[CanterburyBranch@drama.org.nz](mailto:CanterburyBranch@drama.org.nz)**

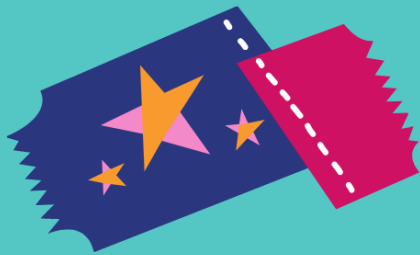
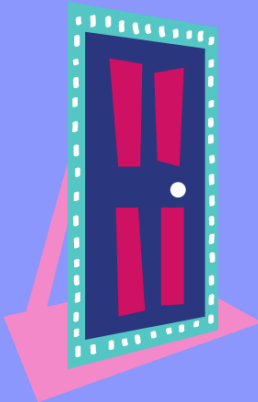
**Facebook: <https://www.facebook.com/groups/425374920934604/>**

# Otago/Southland Branch.



**WELCOME  
BACK,  
TEACHERS &  
PRACTITIONERS!**

*The Otago Southland Branch  
wishes you a great school  
year ahead!*



**JOIN OUR REGIONAL  
BRANCH**

**FACEBOOK PAGE:**

[https://www.facebook.com/  
groups/dunedinramateachers](https://www.facebook.com/groups/dunedinramateachers)



**FIND OUT MORE ON OUR  
REGIONAL WEBSITE:**

<https://rb.gy/aumojw>

---



# Otago/Southland Branch.

## YOUR REGIONAL BRANCH COMMITTEE FOR 2022...

*Regional Rep/ Chairperson / Dunedin POD Coordinator:*

**Kimberley Fridd**

*Vice Chairperson / Secretary:*

**Chris Manley**

*Treasurer:*

**Andrew McKenzie**

*Southern POD Coordinator:*

**Aimee Hazlett**

*Central Otago POD Coordinator:*

**Nick Meissel**

*Primary Representative:*

**Evelyn Mann**

*Other committee members:*

**Ina Bercinskas (Newsletter)**

**Heidi Geissler (Newsletter)**



**WE LOOK FORWARD TO HOSTING YOU ALL IN DUNEDIN  
AT JOHN MCGLASHAN COLLEGE FOR THE NATIONAL  
DRAMA NZ CONFERENCE IN JULY!**

**IF YOU WOULD LIKE TO GET IN TOUCH, PLEASE EMAIL:  
[OTAGOSOUTHLANDBRANCH@DRAMA.ORG.NZ](mailto:OTAGOSOUTHLANDBRANCH@DRAMA.ORG.NZ)**



# PCT Network

**ALL FOR ONE...  
and ONE FOR ALL!**

PCTs – you are navigating a brave new world. But you are not alone! Join our support group where we can:

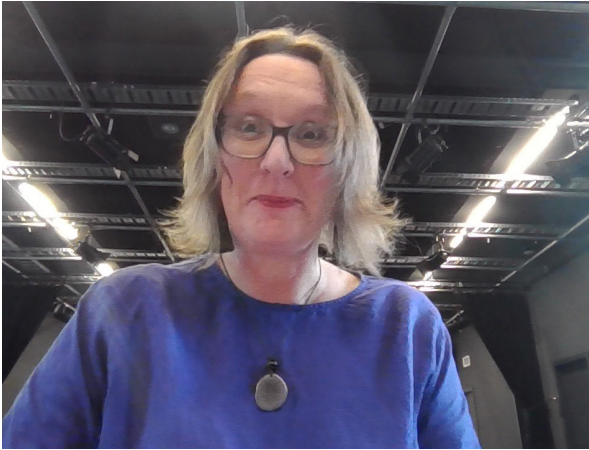
- Share stories and resources
- Enjoy online support facilitated by an experienced secondary drama specialist
- Take part in Zoom sessions with guest speakers
- Ask questions and get answers from both your peers and experienced teachers
- and most importantly...be part of a network of teachers who are beginning their journey as specialist drama teachers

It is completely free to members! Just find us on Facebook now!

<https://www.facebook.com/groups/dnzpctnetwork/>



# Meet a Life Member



**Lisa Simpson** has been a Drama NZ member since she began teaching in 1993 (except years when she forgot to pay my membership!). She has attended many conferences as a member and as a presenter and has contributed articles and units of work to the journal. She recommends this as a way of putting some ideas down on paper and sharing the work you are doing with others. She was involved on the Auckland Branch Committee and, more recently, has been exploring the potential to run a hub in Taranaki, as like many regions, this region is geographically

spread! She was involved in the DNZ HOD handbook project which she says was, “a great opportunity.”

“Being a member of DNZ gives you access to fabulous resources and above all access to a whole bunch of inspiring colleagues to bounce ideas off” she says. “I wanted to become a mentor as a way of sharing the resources that we created (available on the [Drama NZ website](#) in the members’ section!) and as a chance to meet some new people. I was fortunate to have amazing support from DNZ Auckland branch members when I first started teaching and look forward to being able to pay it forward.”

## YOUNG & HUNGRY

### Y&H Tour 2022

Book now for the Y&H Tour 2022: **Occupy**  
Direction and dramaturgy by Erina Daniels

The 45-minute show will feature extracts from a variety of New Zealand plays and playwrights. The 2022 theme will tautoko our NZ histories.

Touring Aotearoa from 2 May – 1 July. More information can be found on our [website](#)

### Y&H Ambassadors

Applications for the Y&H Ambassadors will open on 10 Feb.

Based in Wellington, Y&H Ambassadors attend performances, learn about what goes on behind the scenes and deepen their knowledge and appreciation of the performing arts. In return they share their experience with their classmates and friends.

Passionate drama or English students in years 12 or 13 can sign up via our [website](#) to get involved.

# Associate Highlight

Drama NZ Associate Members are companies and organisations that support our awesome mahi with their membership. In return, we help them get the message out about their products, services and shows. We thought you might like to get to know our Associate Members a bit better, so we're going to highlight an Associate in each upcoming issue.

Meet **Drama Magic**. Headed by Susan Battye (who you may recall is also a Life Member!), Drama Magic researches and develops quality resources and course materials, both written and digital, across a wide range of subjects, for primary, secondary and tertiary levels.

But that's not all! They also build and supply useful set and prop items such as cube, platforms, flats, doors, and more. Stage set and props items are built with quality, durable ply woods, and are painted matt white or black, to your specifications. Their robust but lightweight set items are deliberately designed to fit together in terms of their relative heights for ease of movement by students. Have a custom scenic need, get in touch with them through their website and see what they can do to make your production life easier and safer!



Double-sided flats on wheels



Free standing doors

drama★  
magic



Single Flats

Drama Magic Ltd is an Auckland based company specialising in the design, development and manufacturing on demand, of stage set components such as: free standing doors and windows, flats, bi-folds, double-sided flats on wheels, cube boxes, platforms, props and theatre stage sets.

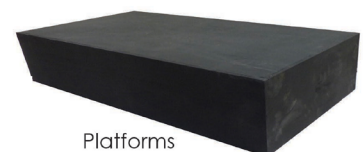
Schools and theatre companies will appreciate our industry standard OSH compliant, wood-based construction, with matt paint finish. Ask us to provide you with a current price list and discuss your specific requirements before arranging a no obligation free quote for these and any other items.

*' The risers, cubes and flats have made an enormous difference, adding a level of professionalism that positively affects the students level of engagement '*

*Nancy Fulford, Wellington East Girls College, September 2021*



Cubes



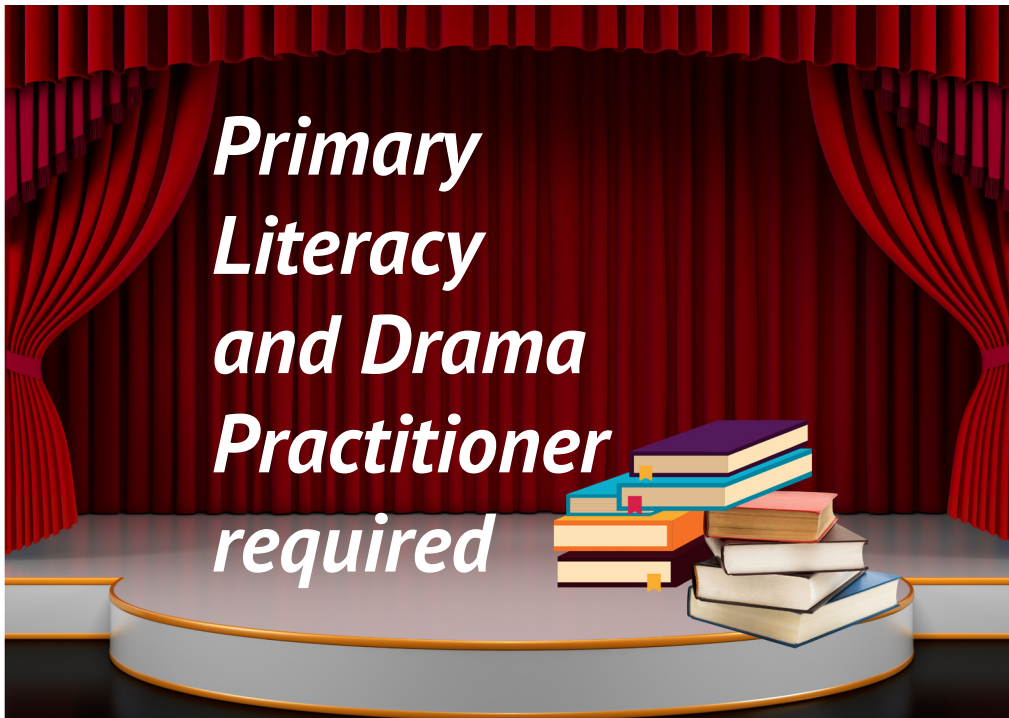
Platforms

[e info@dramamagic.com](mailto:info@dramamagic.com) [W www.dramamagic.com](http://www.dramamagic.com)

# Primary Corner



Are you an experienced primary drama teacher looking for a new challenge?



We are excited to extend our NEX 8 week Drama and Literacy in-school PLD to Auckland schools in Term 2 and 3. We have an enthusiastic group of kura ready to begin.

We are looking for an experienced primary teacher who has expertise in process drama to join our team and deliver our Drama NZ NEX Drama and Literacy PLD in Auckland schools. This role involves working alongside classroom teachers to deliver a creative literacy programme for tamariki . The central kaupapa of the programme is to build teacher confidence and capacity in using drama. Learning outcomes include lifting student engagement in key literacy processes, and achieving specific outcomes in writing.

If you would like further information and a full job description, contact Judy Norton, Primary Rep;

[primary@drama.org.nz](mailto:primary@drama.org.nz).

# Secondary Leadership Mentoring Programme

We launched our programme on 25th January with a hui including all the mentors and almost all the mentees at Baradene College in Auckland. What a wonderful occasion this was, in spite of the threat of Omicron. We all agreed how important it is to meet in person. It is a real shame that two of the mentees were not able to attend because of health concerns. The programme is off to a good start and we have high hopes for 2022 and what we can achieve.



Our day included some fun 'get to know you' activities (albeit all masked up!) and a look at the Running a Drama Department Resources on the Drama NZ website. Mentors then had time for some in-depth conversations with their mentees to build the relationships and identify where the needs are.



Thank you to Nicole Eichstaedt and Baradene College for being such awesome hosts and to Dinna for helping with the organisation of travel arrangements from around the country.

Comments from participants include:

"Excellent! How wonderfully generous of Drama NZ. Thank you!"



"Today's hui has been a wonderful way for me to feel more a part of the Drama NZ community. I already feel less isolated and am excited to learn from the people I have met today throughout the year. Activities, presentations and food was great! Looking forward to our next meeting already!"

Verity Davidson

Tūa Pā



# Successful Summer Pilot



## Two weeks of amazing mahi comes to an end.

For the past two weeks StageAntics has been running the second annual Summer Pilot Programme in association with Music Theatre International - Australasia.

The programme saw rangatahi aged 11 - 18 years come together for a week to work with industry recognised musical theatre experts to workshop a yet to be released Broadway JR musical.



In Dunedin, 31 performers from throughout Aotearoa workshopped MTI's first ever Broadway JR Revue which consisted of 15 musical numbers from Broadway JR musicals such as "Right Before Your Eyes" from *James and the Giant Peach JR*, "Step in Time" from *Mary Poppins JR* at The Mayfair Theatre.



In Wellington, 39 performers from the North Island workshopped Disney's *Finding Nemo JR* rehearsing at Pump Dance Studios and performing at St Andrew's on the Terrace.

Both pilots culminated in showings of work that were enjoyed by friends and whanau who were blown away by what the performers managed to achieve in five days.

The artistic teams included Mark Bradley (Music Director, DUNEDIN), Jeremy Hinman (Director, WELLINGTON), Kane Welsh (Choreographer, DUNEDIN), Olly Humphries (Choreographer, WELLINGTON) and Emma Bishop (Director, DUNEDIN / Music Director, WELLINGTON).

StageAntics is an Auckland based performing arts company that runs weekly classes, workshops and productions in Auckland as well as workshops and holiday programmes in Dunedin, CHCH and Wellington.

Check out [www.stageantics.nz](http://www.stageantics.nz) for more info



# SAVE THE DATE

DRAMA NZ  
AGM  
30 April

Both online and in person  
in Dunedin  
Details coming soon...

## MUSIC THEATRE INTERNATIONAL

Australasia

### CLASSIC & LATEST *releases*

#### PLAYS, PLAYS, PLAYS

Find the perfect play for your group

- **Arthur Miller** - *The Crucible, Death of a Salesman, All My Sons, A View From the Bridge*
- **Kate Hamill** - *Pride & Prejudice, Vanity Fair, Sense & Sensibility, Little Women*
- **Almost, Maine by John Cariani** - now available in both the original version and a new Middle School edition, adapted to suit younger actors.

#### "WORKING" NEW LOCALISED VERSION

Your own community plays a role in this personalized version.



#### "GODSPELL" THREE VERSIONS

Three versions of the show that were previously only available in the U.S. are now available across the world!



#### "DISNEY'S FROZEN JR." NOW AVAILABLE

Apply now for this popular show available for New Zealand schools and musical societies.



#### "DISNEY'S NEWSIES JR." JUST RELEASED

Now available for New Zealand organisations. Seize the day!



[mtishows.com.au](http://mtishows.com.au)



# DNZ News

## **WRITERS WANTED 2022 DRAMA NZ PRACTICE EXAMINATION WRITERS**

*Apply now to be part of the 2022 writing panel  
as a paid contractor for all levels.*

*Email your CV with a covering letter including  
your past experience with NCEA, examinations  
and assessment.*

*NZQA experience is advantageous but not a  
compulsory component.*

## Arts Beyond Borders

Reimagining the curriculum for a (post) Covid world

Our website is now live!

[www.artsbeyondborders.org](http://www.artsbeyondborders.org)

# DNZ News

## **The Top Ten reasons to renew your Drama NZ Membership**

10. Your subscription to Dramatic – Don't let this be your last issue!
9. Access to online resources at Drama.org.nz
8. Free membership for students and PCTs
7. To keep up to date with all that is happening in Drama education as it happens
6. Mentorship and networking support for new teachers
5. Advocacy for our important industry
4. Discounted access to regional and national workshops and events
3. Discounted registration to Conference 2022 – Tīmatanga Hōu
2. Access to deeply discounted PracticeNCEA Exams and the #1 Reason...
1. To be a part of Aotearoa's amazing community of drama educators!

**Renew Your Membership Now**