

Dramatic

DRAMA NEW ZEALAND NEWSLETTER

#51: April 2023

Coming Together Like Never Before



KA MUA, KA MURI
NATIONAL CONFERENCE 2023

1, 2, 3 JULY | ROTORUA



**WHAKAMANA,
MANA REO**

Empowering learners, enriching literacy

25 - 27 September | Hawkes Bay

In this issue: Registrations now open for the National and Primary Conferences; What's happening in the motu; and Drama NZ and Associate News.

Dramatic is proudly brought to you by:



Note From The President

Kia ora whakaari whānau,

Term one has been a wealth of planning for the National Executive team; workshops, conferences and advocating for the arts across the sectors has all been happening quietly in the background.

Our AGM is 7 May and we would love to have your support at this vital meeting for our membership.

Networks of Expertise continues to connect creatives with schools and experienced kaiako with those needing support across the motu, mentoring and online workshops for meet the makers or such awesome mahi as Technology in the Drama classroom. These online workshops have been videoed and will be uploaded to our website in due course so if you missed out they will be there to view.

I was privileged to be a part of 'Reconnecting the arts' in the Hawkes Bay and it was important for Drama NZ to be supporting drama teachers in this hard struck area. You can read more about this mahi on page 13.

Your National executive team is attending some important events coming up in the next term. Nick Meissel and I are attending the PPTA symposium for subject associations so will be able to korero with other associations at this event. Emma Bishop, Judy Norton, Juliet Cottrell and I are attending the NEX summit and presenting two workshops in May about our Networks of Expertise mahi across the sectors. In June Kimberley Fridd and I are presenting at the Drama Australia conference 'Antidote' in Newcastle about Drama NZ's kete for Advocacy and Health and Wellbeing. Emma Bishop and I have also been working with the Ministry teams on the New NCEA standards and how we can best support the Ministry roll out. Exciting times and there is much to look forward to in the drama space.

Our team is well into planning for our two conferences for all sectors – Our theme for this years National Conference is 'Ka Mua, Ka Muri' and we are preparing for a very relevant and useful conference in July that will address key mahi for the times. Our Primary conference 'Whakamana, Mana Reo' is happening in September and will also be a wonderful weekend to invigorate practice. Your National team has been planning extensively- plan to join us soon.

Mā te wā,

Annette Thomson, President



2023 Executive Committee

PRESIDENT - Annette Thomson
President@drama.org.nz

VICE PRESIDENT - Nick Meissel
VicePresident@drama.org.nz

TREASURER - Cory Hare
Treasurer@drama.org.nz

PRIMARY REP -Judy Norton
Primary@drama.org.nz

Samantha Bates
Samantha.Bates@drama.org.nz

Samantha Wehipeihana
SamanthaWehipeihana@drama.org.nz

Emma Bishop
nex@drama.org.nz

Kimberley Fridd
kimberley.fridd@drama.org.nz

Contact us

Email Admin@drama.org.nz

Mentorship Programme
Mentorship@drama.org.nz

National FB
<https://www.facebook.com/DramaNewZealand/>

Primary Edition FB
<https://www.facebook.com/dramanzprimary/>

Instagram
[@drama_nz](https://www.instagram.com/drama_nz)

AGM

Join us for the Drama NZ AGM, 7 May at 1:00pm, St Kentigern Girls' School

There is much to talk about at the upcoming AGM including constitutional changes, National Executive elections, upcoming conferences, and ways we are working to help our members. It is important that everyone is able to add their voice to important decisions about our future. Therefore, we invite you to attend, either in person at the Saint Kentigern Girls' School in Auckland, or via Zoom.

Please register as soon as possible to ensure we have a quorum to allow us to go ahead. All required papers along with the Zoom meeting link will be sent out to you prior to the event.

RSVP now at <https://forms.gle/m1o6LorJxqz6WAJT7>



The poster features the Drama NZ logo at the top left, with the text 'Drama NEW ZEALAND' and 'mahi whakaari o Aotearoa'. The word 'AGM' is written in large, bold, red letters. Below it, the event details are listed: 'Sunday 7th May', '1pm', 'St Kentigern Girls' School', and 'Auckland and Online'. A circular word cloud in the center contains terms like 'AGM', 'ANNUAL GENERAL MEETING', 'LEADERSHIP', 'VISION', 'ACHIEVE', 'MARKET', 'AUDIT', 'CORPORATE', 'REVIEW', 'BUSINESS', 'CONDUCT', 'ASSOCIATION', 'PROJECT', 'LAW', 'MEET', 'ANNUAL', 'REVIEW', 'ASSOCIATION', 'LEADERSHIP', 'ACHIEVE', 'CORPORATE', 'STRATEGY', 'VISION', 'ACHIEVEMENT', 'BUSINESS', 'CONDUCT', 'COMPANY', 'STRATEGY', 'VISION', 'ACHIEVEMENT', 'BUSINESS', 'CONDUCT', 'COMPANY', 'STRATEGY'. A red ribbon graphic is on the right side. At the bottom left, it says 'Register and apologies here' with a red underline. At the bottom right, the phrase 'See you there' is written in a red cursive font.

Drama mahi whakaari
NEW ZEALAND o Aotearoa

AGM

Sunday 7th May
1pm
St Kentigern Girls' School
Auckland and Online

Register and apologies here

See you there

National Conference



KA MUA, KA MURI
NATIONAL CONFERENCE 2023

1, 2, 3 JULY | ROTORUA

**Registration is now open for
Ka Mua, Ka Muri “*walking backwards into the future*”.**
Our hosts this year will be John Paul College.

This year Drama New Zealand Conference explores the kaupapa of Ka Mua, Ka Muri.

Drama kaiako bring to our kura a wealth of experience, our own drama whakapapa and a strong supportive drama whānau. We know that working together and sharing research informed practice, will lead us to new ways of thinking and being that will benefit and support drama learning across the sectors. At this conference participants will be encouraged to walk with their past to realise their future.

Registration fees are heavily subsidised by Networks of Expertise, and ***Early Bird pricing starts at just \$175!***

Registration includes access to three days of stunning PLD and Keynote speakers as well as morning and afternoon teas and Conference Dinner and Cultural Experience.

The Conference aims to look at these three strands:



STRAND ONE

Mātau - Understand Mātauranga Māori

This strand explores what it means to work, teach and learn through a Māori lens, encompassing traditional concepts of knowledge and knowing with a respect and acknowledgement of Māori customs and protocols for all sectors.



STRAND TWO

Mōhio - Knowledge of the NCEA change

This strand looks at the NCEA change programme for Level 1 and if available Level 2.



STRAND THREE

Whakaharatau - Practice Drama in the Curriculum.

This strand looks at anything and everything in our kura for all sectors.



**REGISTER BY CLICKING
HERE NOW**

Call for Presenters

We are seeking presenters that will bring us their own understanding, knowledge and practice within the three strands presented on page 4. This year, with thanks to funding from Networks of Expertise, some presenter costs will be covered, including your full registration and Conference Dinner and Cultural Experience. We look forward to your submissions.

[Click here to submit your presentation](#)



CONTACT US  www.mtnz.org.nz  office@mtnz.co.nz

Epworth Camp, Waikato
19-21 May 2023



MTNZ NextGen Bootcamp Level UP

Bootcamp's Back Baby! MTNZ cancelled training weekends for NextGen during Covid - but we are excited to be back. Bootcamp features masterclasses in the performance disciplines and sound/lighting, plus Level Up workshops to assist young people stepping in to the creative roles: directing, musical direction and choreography. MTNZ hopes to:

- Springboard young people, equipped, into creative roles
- Provide opportunities to grow their performance disciplines
- Encourage life time friendships as thespians throughout Aotearoa
- Support and grow NextGenners understanding of governance
- Help 18-30 year olds find 'their place' in Aotearoa's theatre scene

Conference EXPO

About Conference Expo

This year Conference will be held at John Paul College in Rotorua, the very heart of the North Island. Delegates will find the Trade Expo located in the centre of the conference, along with registrations, and where breaks normally occur.

The EXPO provides a superb way to promote your products and services to proven buyers and network with a number of kaiako and education whānau from around Aotearoa.



Features and Benefits

In advance of the conference, we will be promoting your company in our *Dramatic* newsletter and direct email, maximising your brand placement with Drama NZ members.

If you would like to include a flyer, resource, or asset to be included in delegate packs, just let us know.

The exhibitor fee includes: drinks and nibbles Saturday evening; morning tea, lunch and afternoon tea Sunday; morning tea and lunch Monday for one staff member.



Pricing and Options

Manned Display

Be there in person to visit with customers and expand your reach. Donated goods and / or services may be accepted in lieu of monetary payment. Please get in touch if you have something to offer.

\$175 for current Associate Members
\$250 for non-Members
\$325 includes your annual Associate Membership

Additional Options

\$100 per additional staff member
\$110 for Conference Dinner and Marae Experience Sunday evening, per staff member

Un-manned Display

Unable to attend in person? You can still be represented via an un-manned table set up and kept organised by our conference team throughout the conference.

\$100 for current Associate Members
\$150 for non-Members
\$250 includes your annual Associate Membership or Renewal

**REGISTER BY CLICKING
HERE NOW**

or email conference23@drama.org.nz

Primary Conference

The Drama New Zealand NEX Primary Drama and Literacy Project is delighted to present for the second time:

W H A K A M A N A , M A N A R E O

Empowering learners, enriching literacy

25 - 27 September, 2023 Hawkes Bay

Havelock North Intermediate School



This conference is for early childhood, primary and intermediate kaiako, and has as its kaupapa, 'for teachers, by teachers'. Experienced teachers will be leading hands-on workshops full of practical drama strategies which teachers can take back to their classrooms. This will also be an ideal opportunity to share practice, and to build networks with like-minded teachers near and far. This conference follows on from a similar, very successful and enjoyable TRCC conference in 2019. For a glimpse of this conference go here. See below for a snippet of feedback:

"Fantastic hui. So much great energy and enthusiasm and willingness by everyone to share their knowledge/expertise."

"This has been by far the best PLD course I have been on. I could tell a lot of thought had gone into preparing this course as it was highly organised and every aspect seemed very intentional. Each workshop and keynote speakers were outstanding, deeply engaging and incredibly inspiring. I left this course on a high! I felt very inspired to give all the activities we had learnt a go in my classroom."

"This conference absolutely rekindled my passion for teaching the Arts and reinforced what I am doing with my students DOES matter"

Cost: Early Bird \$275 (Two scholarships available @\$500 each) Email primary@drama.org.nz to nominate a teacher.

We will be welcoming outstanding practitioners from far and wide. **Special guests include:**

Dr Julie Dunn – Julie is a passionate drama educator whose career has been focused on supporting educators working in the primary classroom. She is the author of several books, including, with John O'Toole, "Pretending to Learn - Drama in the Primary and Middle Years". Julie has delivered keynotes, workshops, and masterclasses in drama education across the globe, particularly in the Asia Pacific region. Julie is an Adjunct Professor at Griffith University, Australia. We are delighted that she will be present throughout, as well as leading practical workshops.

Prof. Peter O'Connor – Peter is the Director of the Centre for Arts and Social Transformation at the University of Auckland. He is an internationally recognised expert in making and researching applied theatre and drama education. Peter's most recent research includes multi and interdisciplinary studies on the creative pedagogies and the arts, the nature of embodied learning and the pedagogy of surprise. Peter led the development of Te Rito Toi, an online resource to support the return to schools during COVID 19 by using an arts and well being approach. Peter will also be presenting throughout the conference.

**REGISTER BY CLICKING
HERE NOW**

Auckland Branch.

Kia ora koutou!

As term one rolls to a close it is time to reflect on some events that we have had so far and look forward to things coming up in the future...

Red Leap Theatre Workshop for Teachers

On Saturday 18th February, the stage lights dim in the auditorium of Sacred Heart College in Tamaki Makaurau. Focused beams of torch light illuminate the darkness. Slowly, shadowy bodies emerge. Frozen scenes flash across the stage: families escaping, faces of curiosity, anguish, and fear; bodies stretching up and out into the darkness.

These 'arresting images' are inspired by the work of Red Leap Theatre, an Auckland-based visual theatre company renowned for its work on stages across Aotearoa. The performers? A group of keen drama educators gathered together on a sunny Saturday afternoon in February to experiment with Red Leap's ingenious devising techniques.

Led by artistic director Ella Becroft, we got our sweat on in a highly physical workshop that explored provocations for devising, refining techniques, and a ton of games and laughter. We scurried across the floor as rats, pulsated as bacteria, stomped our way through the space as invaders, and made human 'landscape ladders' that required us to bend, shape, and twist our way through each others' bodies. These exercises quickly helped us to shed our inhibitions about using our bodies and sharing space with each other. They also provided useful starting points for getting our students to move beyond clichés in search of imaginative ways to tell stories.

The workshop explored techniques used by Red Leap in its production of *The Arrival*, based on Shaun Tan's wordless graphic novel. Working in ensembles, we took inspiration from the book's evocative black-and-white images to devise performances using our bodies, torch light, and simple sheets of paper. We left the workshop feeling both tired and inspired, as well as brimming with ideas of ways to implement the work in our classrooms.



Red Leap's production *Dakota of the White Flats* takes the stage at Q Theatre this April, and its new show *Moe Miti* is in development and set to premiere in August 2023. Keep in touch with Drama New Zealand's Auckland Branch for upcoming dates for teacher meet ups and theatre nights for some exciting productions happening this year!

Many thanks to Ella, Sacred Heart College, and the participants for a great day of learning.

Red Leap theatre company have also offered teachers in Tāmaki Makaurau discounted tickets to the opening night of their show *Dakota of the White Flats* at Q Theatre on 26th April. This show is a visual feast and not one to be missed. Keep an eye on our Facebook page for more information.



Te Rākau Theatre - Kaiako Wānanga

Work with Te Rākau Theatre, Aotearoa New Zealand's longest surviving independent Māori theatre company with Jim Moriarty MNZM, Kaitohu (Director) & Kaihuawaere (facilitator) along with Helen Pearse-Otene MA, PhD, Kaituhi (writer) & Kaihuawaere (facilitator).

The wānanga is suitable for all sectors and will explore the kaupapa of Te Rākau's play *The Swing* by Helen Pearse-Otene and their approach to creating through a mātauranga Māori lens and connection to mana whenua.

#rua 11 May Tāmaki Makaurau

This workshop is funded by Networks of Expertise and is offered at no cost to kaiako.

Register now:

<https://forms.gle/Gr82RP6CfEwSwJms8>



Frantic Assembly in Aotearoa

Frantic Assembly is coming to our shores. They will be running one workshop in Tāmaki Makaurau's workshop in April.

WHAT DOES IT INVOLVE?

- Work collaboratively to create new devised material
- Learn physical theatre techniques
- Explore how to use physicality to create meaning and subtext
- Build your own physical confidence and develop your skills
- Learn new and exciting approaches to devising work to take into your own practice

This is a highly physical workshop for anyone who wants an insight into how Frantic Assembly creates theatre. It will not explore text or vocal exercises.

This course is designed for participants aged 18 and over. No previous experience necessary - this workshop is suitable for all.

What is coming up in the region...

Thank you to all of you who have added your shows to our region's Calendar of events! We are sending massive chookas, endless patience, and all the good vibes to the following kura as they embark on shows and performance points!

- *Bright Star* @ Selwyn College 25 March - 1 April
- *Too much Punch* @ Rosehill College 4 & 5 April
- *Buckets* @ Kristen School - 5 & 6 April
- *The Oresteia* @ Pakuranga College 3 May
- *Urinetown* @ Glendowie College 4 - 6 May
- *PUFFS* @ Mt Roskill Grammar 10 - 12 May

If you would like to share what you are working on please head to the Facebook page and add your dates to the calendar or email aucklandbranch@drama.org.nz. We cannot wait to see that you create and support the exciting mahi that is happening in the region. We hope that you all get a bit of a break and a breather in the school holidays. And although I don't want to jinx it, I hope the runway into term two is clear.

Kia kaha Tāmaki Makaurau, Amanda Burnett

Canterbury Branch.

It's a hive of activity in Canterbury for the start of our year, in spite of the challenges of Covid (still impacting teachers and students) and the busyness of the first term.

The first of the Te Rākau workshops with Jim Moriarty for teachers took place at Cashmere High School on 30th March. An amazing opportunity to work with this ground-breaking group, and free to all participants (thanks to support from Drama New Zealand NEX funding). These workshops are being rolled out to the rest of the country this year. Thank you to Shaun Edwards-Brown for initiating this project.



Events in the region to look forward to:

We are excited to welcome Frantic Assembly to Christchurch in April. Our branch has offered \$100 scholarships to 5 members to help pay for this wonderful opportunity. Really looking forward to these workshops for teachers and students. We would like to encourage teachers to band together with teachers from schools close by for the student workshops as these are quite pricey.

Annette Searle and Sam Bates are planning free primary workshops throughout Christchurch over the next 2 terms. They will be coming to you. Look out for an email coming soon to schools. In the meantime, if you are interested, you can contact Annette or Sam through me.

I am offering free workshops and support to regions out of Christchurch, mainly the West Coast, Marlborough, Nelson/Motueka at a time

that suits you. If you are interested, contact me at veritydavidson@drama.org.nz

Other Matters:

We would like some input on setting up smaller drama communities / pods. Our region is very large and covers a huge area. It would be great if we could set up small groups in more remote regions who could meet and support each other, with a contact person that I could liaise with to pass on information from Drama NZ and pass your ideas and concerns back to the Canterbury Committee. Please contact me with any suggestions.



Verity Davidson
Regional Rep: Canterbury
veritydavidson@drama.org.nz



An exciting professional learning opportunity!

Ōtautahi Christchurch Primary Schools

We are excited to continue our NEX 8 week Drama and Literacy in school PLD to primary schools in Christchurch for 2023. Teachers tell us this collaborative model of PLD builds confidence, is enjoyable and rewarding. In this PLD, a primary drama expert works alongside teachers in their classrooms, using drama strategies to build student engagement and agency in literacy.

Opportunities to learn about Aotearoa NZ Histories in exciting and engaging ways can also be integrated into the project. Our NEX's kaupapa is to foster collaboration, innovation, and high-quality practice for teachers, so they can work with ākonga to strengthen their engagement in literacy, and their achievement in a variety of literacy outcomes, from the oral to the written.

The programme involves:

- An school-hui
- 5 in-class mentoring sessions in classrooms
- ZOOM support and extensions over a term
- Longer term, teachers become part of, and contribute to, a professional network so that their learning is sustainable.
- Access to online support and resources

This project is largely funded through the Ministry of Education Networks of Expertise. To participate, schools will need to sign up to a Primary Drama NZ membership which is \$60 for four teachers within a school.

"This was an amazing opportunity and I feel very lucky to have been a part of it. This program has helped change not only my classroom and practice but my belief in my own skills with drama. This program could help so many teachers find a way to revitalise their classroom and add something special to their teaching. THANK YOU." - Teacher participant, Phase One.

Please be in touch if you, or your kura, are interested in taking part in this professional learning and would like further information.

Contact Judy Norton, Drama NZ Primary Rep; primary@drama.org.nz

or Sam Bates, Drama NZ Executive member based in Christchurch; samantha.bates@drama.org.nz



6 MAY - 3 JUNE 2023

APPROPRIATE

By **Branden Jacobs-Jenkins**

SCHOOL MATINEE
11am Tuesday 23 May
 All tickets \$20

Run time approx. 2 hours.

Includes an after show Q&A with cast and creatives and an education pack.



TO BOOK, CONTACT

COMMUNICATIONS@COURTTHEATRE.ORG.NZ

SEASON SPONSOR



CORE FUNDER



SHOW SPONSOR



Massey Branch.

Tēnā koutou,

It has been a heartbreaking time for many in our region. I have been thinking of you and hoping you are all safe and as good as can be expected.

Many of us have not had the chance to connect or speak over the last few weeks as we continue to deal with the aftermath of Cyclone Gabrielle. We have appreciated the support of DramaNZ with Peter O'Connor and Annette Thomson visiting us in Hawkes Bay, sharing knowledge, chats, and opportunities to reconnect.

In these difficult times, a few events have managed to prevail, and teachers are putting in tremendous mahi to continue providing creative outlets and experiences for our rangatahi.

Mā te wā,
Ruby Masom / Regional Rep



2023

MASSIVE THEATRE PRODUCTIONS

MY HANDS ARE IN SOIL

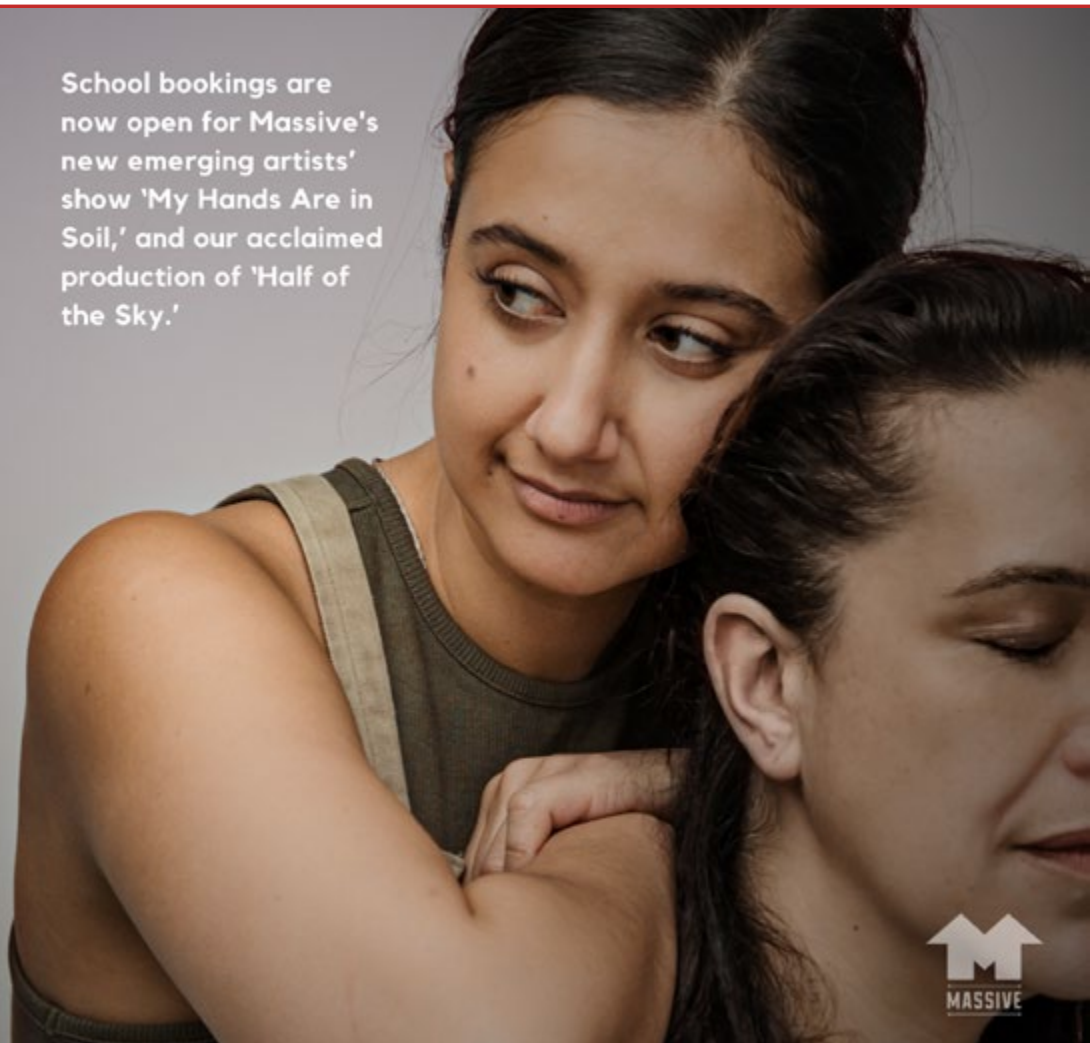
AUCKLAND July 26-28
WHANGĀREI August 3-4

Half of the Sky

NEW PLYMOUTH August 31
AUCKLAND Sep. 13-15

INFO/SCHOOL BOOKINGS
massivecompany.co.nz

School bookings are now open for Massive's new emerging artists' show 'My Hands Are in Soil,' and our acclaimed production of 'Half of the Sky.'



A response to Cyclone Gabrielle

Our National Executive and I were dismayed at the devastation after the recent North Island cyclone. As an Ōtautahi resident I could understand some of what drama teachers would be experiencing right now and into the future. Peter O'Connor from the Centre for Arts and Social Transformation, Auckland University asked Drama NZ to join him in the Hawkes Bay to provide support. I was privileged to be asked and through 'Reaching the Edges' funding travelled to the Hawkes Bay in March. A massive thank you to Juliet and Peter Cottrell and Andrea Brigden for hosting at Toitōi Performing Arts Centre.



As we drove from Napier airport to Hastings we saw some of the devastation in the area – a car perched up a tree, train tracks mid air, bridges washed away, corn crops silted over.



There were three workshops throughout the day with Peter O'Connor and Ginnie Thorner taking participants through one unit from the Te Rito Toi website, 'A Teaspoon of Light'. Participants were led through other resources on the website and also shown the JK Foundation programme,

'Mitey', which is partnering with Peter to develop a programme throughout NZ for mental health of our ākonga.



Fifty teachers participated in the three workshops and left with resources to take back to their schools. The next day I visited a number of schools and Drama teachers in the Hawkes Bay – A massive thank you to Ruby Masom, Massey's Regional Rep, who hosted a get together for Drama teachers at Iona College. As Peter said at the workshops this is just the beginning – we aim to return with more workshops using the arts to reconnect Hawkes Bay teachers and support them in their kura. We also have our amazing Primary Conference in the Hawkes Bay in September convened by Juliet Cottrell.



Your Drama NZ team is here to support any Drama educator throughout Aotearoa who is going through tough times – please reach out if you need to.

Annette Thomson, President

Otago/Southland Branch.

Dunedin POD

On Tuesday 7th February the Dunedin POD of the Otago/Southland Branch met at Ombrellos. It was wonderful to see so many faces come together to socialise to start the new year. Top of the agenda was discussing ways to connect our students across Dunedin and the idea of forming an across school's Improv Group led by Dan Allan.



Sheilah Winn Shakespeare Festival

Final preparations are being undertaken across Otago for our regional festival due to take place on Thursday 30th March. We wish all our schools the best of luck for their performances. A huge thank you to Debbie Vercoe for all her organisation surrounding the Otago festival.

Pictured: Students from Trinity Catholic College preparing for their scene from King Lear.



Introducing Ōtepoti Secondary Improv Club!



We are thrilled to announce a new cross-school project in Dunedin... The Ōtepoti Secondary Improv Club will provide secondary schools in Ōtepoti Dunedin with an extra-curricular improvised theatre session for students. We are blessed to have the wonderful Dan Allan tutor the sessions this year.

The aim is to deliver a fun, hour long, weekly session of games and scene work for separate junior and senior groups in a neutral space in central Dunedin at an after-school time. The group will provide an improvisation outlet for schools who cannot offer it as an extra-curricular group and also serve to develop extra skills and play-time for students who are already taking part in their own school improv group. We are excited for this new opportunity to begin in Term 2.

For more information please get in touch with otagosouthlandbranch@drama.org.nz

Good luck to Bayfield High School for their upcoming musical:



Congratulations on everyone across the region who have been involved in this year's Fringe Festival. What a fantastic line up.



Waikato Branch.

What a term it's been, like Dorothy caught in the tornado there has been a flurry of activity that has spun us around and transported through 10 weeks in the blink of an eye.

We had a wonderful SGCNZ UO SW Shakespeare Festival. It was great to be back in person, sharing our work with each other. Hamilton Girls' High School, Hillcrest High School, Cambridge High School, St John's College, Te Awamutu College, and Te Aroha College entered scenes from a wide variety of Shakespeare's plays; the more uncommon ones being *Comedy of Errors*, *Measure for Measure* and *The Tempest*. Sacred Heart College came out to support the efforts and check out the competition for their entries next year.

The results were:



15 Minute Performance winner: Hamilton Girls' High School with *The Tempest*



5 Minute Performance winner: Cambridge High School with *Measure for Measure*



NSSP Direct Entry students: Karissa Wan from Hillcrest High School. Karissa both directed and performed in the Hillcrest High School scenes.

Massive Theatre has been in town, running their Rangatahi workshops at the Meteor Theatre and visiting some of the local schools for more in depth work.

Hillcrest High School's production of *Pippin* opened at Clarence St Theatre on 1 April. I was delighted to be invited to attend a matinee dress rehearsal, to witness this wonderful production. Congratulations to the company and crew of this production.



Te Awamutu College and Papamoa College have both announced productions of *The Addams Family* and Sacred Heart College is putting on *The Sound of Music* in Term Two. No doubt there is a flurry of work and excitement happening in those departments.

Morrinsville College is hosting a Matariki Arts Showcase next term, so we are looking forward to seeing what awesomeness they have in store.

Hope everyone has survived Term One and is ready for a well deserved break, before we do it all again.

Nga mihi

Morag Carter - Regional Rep

(Shakespeare photos by Sam (Mars) Salcedo of Te Awamutu College)

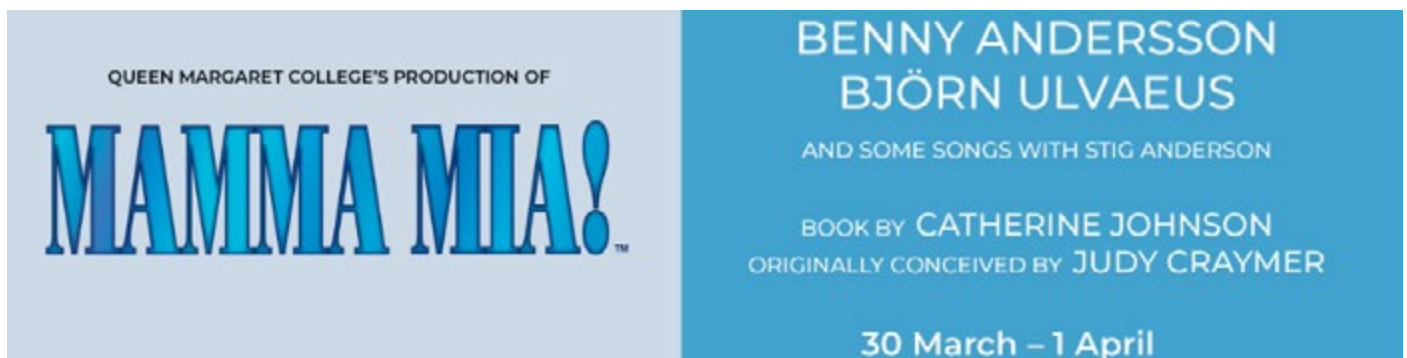
Wellington Branch.

Tēnā Koutou,

Wellington region is currently alive and kicking and focused squarely on a bright and exciting horizon.

Firstly, in response to a slightly steadier or at least more predictable COVID outlook, Wellington schools appear to be in full musical production mode presently.

Chilton's currently wrapping *Frozen Jr*, *Mamma Mia* is about to kick off at Queen Margaret's followed by *Moana Jr* out at Mana. Then *Sister Act* at Wellington East, *Urinetown* at Wellington College and HIBS with *Into the Woods* will close out Term Two. Not to mention the four or so Community productions on this year, that offer even more performance opportunities for our students outside the school context.



Also looking ahead, our first 2023 meeting, held on the 13th March at Wellington College, was a chance to discuss the possibility of the Wellington playing host to Trans-Tasman Drama association conference in 2024. Those in attendance (along with an equally large contingent unable to be present but nonetheless in communication) were unanimously in support of the idea.

There had been a working plan for the Australia and New Zealand conference to be held back in 2021 but of course COVID stomped on that, but now fortunately it is clear we are able to build on the considerable mahi the likes of Kim Bonnington, Rachel Steele and Jo Matheson had already done in 2019-20. Sincere thanks guys.

Nextly, Beth Draper (with support from other regional membership) is developing a follow up workshop examining implementation strategies around the new level one standards. A date (to coincide with a teacher only day) of 1st of June has been set and the challenge of hosting and delivering in 'role' with workshop participants playing a class of Miss Draper's students, promises to make the workshop a memorable, fun and performative proposition. More details to come early next term.

Finally, I would like to mention the extremely exciting upcoming season of Red Leap's *Dakota of the White Flats* in May/June at Te Ahaha, Wellingtons newest Performing Arts Institute (<https://www.teauhaevents.com/home/dakota-of-the-white-flats/>)

This company's work is never less than astounding and this show in particular will be one not to miss taking school groups along to.

DNZ Wellington and Red Leap have workshopped together last year and it is really exciting to hear that they are willing to arrange a follow up workshop to accompany seeing *Dakota*. Suffice to say get tickets to *Dakota*, it will sell out, and please contact me if you would like to take advantage of this exceptional opportunity to unpack the show in a practical workshop.

Ngā Manaakitanga ~ Tama Smith



Step inside the world of theatre

From writing to lighting to stage fighting— learn how to tell stories through the art of live performance, and study the critical and historical dimensions of theatre.



[wgtn.ac.nz/theatre](https://www.wgtn.ac.nz/theatre)



NEX Drama and Literacy Project around the motu

Murihiku /Southland and Ōtepoti/ Dunedin

Evelyn Mann has been extremely busy in Ōtepoti / Dunedin and Waihōpai / Invercargill now all her kura are underway. Takitimu Primary School has had a block of mentoring sessions. Now some teachers are beginning to lead parts of the drama as their confidence and knowledge of drama strategies and conventions grow.

In Dunedin, Ravensbourne and St Leonards Schools are also into Phase One. As these schools are in close distance, Evelyn is running a shared Teacher's Only morning together on 24 April where they will participate in a drama together and formulate a shared plan moving forward. This programme is not just about building individual capabilities in teaching drama but also building connections and relationships so kaiako can support and learn from each other on their journey.

Two Dunedin North Teachers are continuing into their second year of the programme and next term Evelyn will also be back in Waihōpai /Invercargill, mentoring at Ōtātara as well. We appreciate Evelyn's mahi in our southernmost region.

Tāmaki Makaurau / Auckland

We are delighted to have Kim Snider as our new Tāmaki Makaurau Mentor Teacher. Kim brings a huge wealth of knowledge and experience to the role, having been a drama teacher in Toronto, Canada for many years, as well as being a former President of CODE, the drama and dance subject association in Ontario, Canada. She has also facilitated educator workshops throughout the world. She is currently completing her PhD at the University of Auckland which has allowed her a little extra time for this mentor role.

On Monday, 20 March, we launched our hui for this year's cluster of kaiako. Thank you to Bucklands Beach Intermediate for hosting. They

have a great contingency of kaiako involved this year, four beginning Phase One and two continuing in Phase Two. Joining the hui, were two new mentees from Balmoral School. Kim took our mentees through some of the activities from a new Drama NZ unit that is going to be available soon, *Finding the Treasures Within*, based on the novel, *Finding*, by David Hill. This unit makes many links to the Aotearoa Histories Curriculum. She combined this with rich source material from *The Arrivals*, by Shaun Tan to deepen the story. The participants enjoyed the opportunity to place themselves in the role of learners, collectively making connections and discoveries about the characters, their motivations and what drives them to move from Scotland to New Zealand.



Ōtautahi/ Christchurch



Six teachers from Ararira Springs Primary are part way through their Phase One project working with our Primary Drama specialist, Sam Bates. We have teachers and students from across the school participating in the project, from New Entrant to Year 8. The teachers expressed an interest in using Drama as an exciting way into the Aotearoa NZ Histories

curriculum. *The Little Kiwi and the Treaty* unit is proving popular with the younger students. The senior students have been trialling the first few lessons of *Finding the Treasures Within*, based on David Hill's novel about an immigrant Scottish family and their first encounters in Aotearoa. It has been great to see the teachers discovering how effective and engaging Drama can be for students and how Drama can be integrated into Literacy and Inquiry learning in the classroom.



We are looking for more Primary and Intermediate schools in Ōtautahi Christchurch to take up this great opportunity and participate in the Drama and Literacy project. We have spaces available for Term 2 and Term 3. If you know of anyone who may be interested in this amazing opportunity, encourage them to get in touch with Judy or Sam. See the flyer below for more info.

An exciting professional learning opportunity! Christchurch Primary Schools NEX Drama and Literacy Project in school PLD

Teachers tell us this collaborative model of PLD builds confidence, is enjoyable and rewarding. In this PLD, a primary drama expert works alongside teachers in their classrooms, using drama strategies to build student engagement and agency in literacy.

- > The programme involves:
- > An school-hui
- > 5 in-class mentoring sessions in classrooms
- > Zoom support and extensions over a term
- > Longer term, teachers become part of, and contribute to, a professional network so that their learning is sustainable.
- > Access to online support and resources

Please be in touch if you, or your kura, are interested in taking part in this professional learning and would like further information.

Contact Judy Norton, Drama NZ Primary Rep; primary@drama.org.nz or Sam Bates, Drama NZ Executive member based in Christchurch samantha.bates@drama.org.nz

Drama NZ News



We are thrilled to have a superb Scholarship Drama mentoring programme for you facilitated by the amazing team of Emma Gillies, Leigh Sykes, and Emily McRae.

**Workshop One - Intro to Scholarship Drama
Kaiako only
ONLINE -Thurs 25 May 4.30pm-6.00pm**

**Workshop Two - Intro to Scholarship Drama
Ākonga only
ONLINE -Thurs 1 June 4.30pm-6.00pm**

Future workshops include Masterclasses on each of the three components; in person student workshops across the motu in October holidays, and general how to...

Also remember to post any questions to the **Facebook Group** as the year goes on...

Register for Workshop One at <https://forms.gle/KAAAQopoS54xMeXv8>



Embracing Diversity: A Seminar

EPC's 2023 professional development seminar is about 'Embracing Diversity Through Communication and Performance.'

Over two days, you'll hear from Nina Nawalowalo ONZM, Tānemahuta Gray, Joseph Boon, Lynda Chanwai-Earle, Penelope Haines, Brannavan Gnanlingam, with more speakers being announced soon!

**Tickets available on EventBrite.
6-7 July 2023
Toi Pōneke, Wellington**

EPC offer excellent opportunities for connection and professional development throughout the year. Look into EPC membership tiers today!



www.epc.org.nz

Drama NZ News



kaiako wānanga

#tahi	30 March	Ōtautahi
#rua	11 May	Tāmaki Makaurau
#toru	18 May	TBC
#whā	1 June	Pōneke
#rima	8 June	Ōtepoti



WĀNANGA FUNDED BY NETWORKS OF EXPERTISE

Work with Te Rākau Theatre, Aotearoa New Zealand's longest surviving independent Māori theatre company with Jim Moriarty MNZM, Kaitohu (Director) & Kaihuawaere (facilitator) along with Helen Pearse-Otene MA, PhD, Kaituhi (writer) & Kaihuawaere (facilitator).

The wānanga is suitable for all sectors and will explore the kaupapa of Te Rākau's play *The Swing* by Helen Pearse-Otene and their approach to creating through a mātauranga Māori lens and connection to mana whenua.

This workshop is funded by Networks of Expertise and is offered at no cost to kaiako.

Register now at <https://forms.gle/Gr82RP6CfEwSwJms8>



“Epic, worthy, inspiring workshop that showed the direction our teaching needs to go in.”

Samantha Boyce-Da Cruz

“Ka nui te aroha ki te whānau o Te Rākau. It was not what I expected - a chance for self-reflection and empowerment. I hope we can do more!”

Jay Grubb

“Some very tired but eager for learning teachers turned up to the Te Rākau workshop at Cashmere High School. A week before the end of term, one more week till break with an endless week of assessments, tidying sorting planning ahead. But this workshop was important - to our bones important - Canterbury ngā mihi for sharing of yourselves and embracing this mahi, truly a life-affirming and thought-provoking workshop both professionally and personally: Join us Aotearoa: sign yourself up”

Annette Thomson

Drama NZ News

Drama NZ needs YOU! Being part of the Executive Team gives you a voice in the industry and your Association, enhances your teamwork and leadership skills, and looks excellent on a resume. If you are looking to upskill while making a difference, then the National Executive could be for you.

JOIN OUR EXECUTIVE TEAM



About Us

Drama NZ is the national subject association that advocates for and educates teachers of Drama in Education in Aotearoa.

We need help with:

- Marketing
- Te Ao Maori & Tikanga
- Tertiary Representation
- General governance



JOIN US NOW!

Express your interest by
emailing Annette Thomson
president@drama.org.nz



Drama NZ News



NEW ZEALAND QUALIFICATIONS AUTHORITY
MANA TOHU MĀTAURANGA O AOTEAROA

The 2023 Drama National Moderator Report is available on the Drama NZQA subject page:

<https://www.nzqa.govt.nz/ncea/subjects/drama/nmrs-2/february-2023/>

Free NZQA Pūtake online workshops

Further guidance and support about the 91220 (2.8), 91516 (3.5) and 91519 (3.8) standards are available in a free Online Best Practice Workshop on our Learning Management System Pūtake. Three free bite-sized modules for devising drama (91513) are also available. This content can be accessed via the Online Assessor support button on the Drama subject page on the NZQA website.

<https://www.nzqa.govt.nz/about-us/events/assessor-support/>



Proud to represent the finest playwrights from all over the globe, and especially here in Aotearoa. We are bringing in new titles every month. Check out our website at www.playbureau.com and follow [The Play Bureau on Facebook](#)

EXTRA
PERFORMANCE
TUES 16 MAY 11AM

Four women.
Infinite strength.
A love song of
mana wāhine.

WITI'S WĀHINE

BY NANCY BRUNNING



2 – 20 MAY
ASB WATERFRONT THEATRE

Nancy Brunning's tribute to the powerful wāhine of Witi Ihimaera's writing. Suitable for Year 9 to 13.

BOOK NOW boxoffice@atc.co.nz

HAPAI
PRODUCTIONS

AUCKLAND
THEATRE
COMPANY

PRINCIPAL
FUNDERS:



CORE
FUNDER:



Associate News



The Court Theatre is re-launching its exciting Youth Crew Programme!

This year each term will have a specialist focus on an area of backstage theatre production. We are kicking things off in Term 2 with the first focus being on Costume Design.

Please pass this information on to any students you may have that are passionate about working in the backstage departments of theatre and in particular anyone who has an interest in costume design. This course is perfect training to take their interest and creativity to the next level. We are always needing more designers in theatre and are keen to start training the next generation of designers who will hopefully be able to one day work with us professionally.

This course is for 15 – 21-year-olds and will run for 8 weeks on Saturday afternoons, taught by professional costume designer Nephtalim Antoine.

Nephtalim Studied Costume design in Wellington and has experience as a bespoke tailor and fashion designer. Prior to working in TV and film, He worked alongside his family who were costumiers and designers for the Caribbean community's carnival in Canada, Trinidad & Tobago as well as Brazil.

Explore the many choices and conversations involved in the design process that allow the costuming of a production to support the themes and aesthetic of the piece, as well as the practical considerations for actors. After learning about the process and researching successful design concepts, students will be challenged to create and present their own design concept while mentored throughout the different stages. Discover the depth of thought and exciting creativity that is used in the role of a costume designer and gain skills to further pursue this area of theatre work.

Programme Details:

- Saturday 29th April - Saturday 17th June
- 1pm -2:30pm
- At The Court Theatre
- Cost \$150 (8 sessions)
- Note that students are expected to provide their own stationary and basic art materials, such as pens, pencils, coloured pencils, and a notebook.

To register your space for this programme, follow the link below (limited numbers available on this course). <https://my.courttheatre.org.nz/6913/6914>

Term 3 will focus on stage and special effects make-up, and term 4 will focus on Set design (so start planting the seeds for any students that may want to get further professional training in those areas.)

Warmest

Riley Harter

Education & Outreach Production Manager

03 974 1417 • riley.harter@courttheatre.org.nz • www.courttheatre.org.nz

Associate News

Exploring innovative ways of teaching secondary drama and mathematics online in a New Zealand secondary school context during the COVID-19 pandemic



This project aims to investigate and compare the experiences and practices of New Zealand secondary school drama and mathematics teachers when they moved from face-to-face to online teaching due to the lockdown.

What will Participants be asked to do?

Should you agree to take part in this project, you will take part in a zoom interview for approximately one hour. This will be a focus group interview with a small number of participants. You will be asked open-ended questions about your experiences and practices during online teaching during the COVID-19 pandemic. The precise nature of the questions has not been determined in advance but will depend on the way in which the interview develops. If the line of questioning does develop in such a way that you feel hesitant or uncomfortable you can decline to answer any question(s).

What Data or Information will be collected and what use will be made of it?

The interview will be recorded, and a transcript made using Zoom and Otter tools. The data collected will be securely stored in such a way that only those mentioned below will be able to gain access to it. Any personal information held on the participants will be destroyed at the completion of the research even though the data derived from the research will be retained for at least 5 years in secure storage. No material that could personally identify you will be used in any reports on this study.

The findings will inform the development of a journal article about the opportunities and constraints caused by the shift to online teaching. A set of recommendations for teachers will also be generated.

If you have any questions about our project, either now or in the future, please feel free to contact: Trish Wells University of Otago College of Education trish.wells@otago.ac.nz

Associate News

WAAE Survey on Culture and Arts Education

You are invited to participate in a UNESCO survey that will help formulate the UNESCO process for the Framework on Culture and Arts Education. The purpose of this survey is to hear the voices of drama teachers, teaching artists, and all

those involved in our field, to be able to map the situation concerning drama/theatre education in our case, or arts education as a whole, and also map the needs and obstacles we encounter making this our contribution to the consultation process for the UNESCO Framework on Culture and Arts Education, a new document that is much needed in this post-Covid era.

To ensure the inclusion of the voices of arts educators from different geographical points in the survey, we ask you to fill it in and also help us to disseminate it within your networks.

The survey was designed by the World Alliance for Arts Education (WAAE), in consultation with UNESCO.

In order to include a great range of opinions from arts educators around the world, we would like to invite you to reply to the Survey by clicking on the following link:

<https://survey.unesco.org/3/index.php?r=survey/index&sid=883332>

The deadline for completing the survey is the 15th of April 2023. The results of the survey will be presented on the 24th and 25th of May, during the UNESCO International Arts Education Week



drama★
magic

“Built to Last”

Stage Set Items for Schools



Enquire now:

info@dramamagic.com

www.dramamagic.com

Associate News



MUSIC THEATRE INTERNATIONAL

SAVE THE DATE!!

20, 21 OCTOBER, 2023

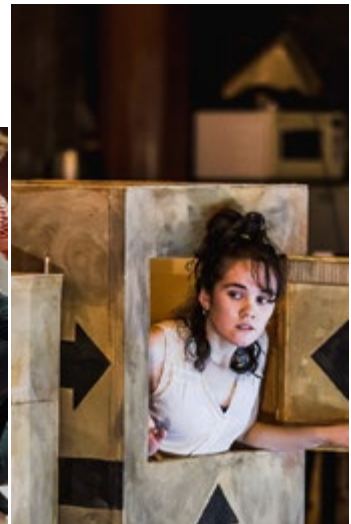
THE VICTORY CENTRE
AUCKLAND

www.juniortheatrefestival.nz

junior theatre Festival NEW ZEALAND

The poster features a group of diverse young performers in various poses, some singing and some dancing, set against a dark, starry background. The text is in a mix of white and pink colors.

Develop Your Devising with Red Leap Theatre



School Workshops and Video Devising Resource

Red Leap Theatre has many ways you can develop your theatre devising practice and learning. We invite you and your students to immerse yourselves in practical, physical devising tools with in person workshops in schools or our new video resource.

Contact emma@redleaptheatre.co.nz for more info.