

Dramatic

DRAMA NEW ZEALAND NEWSLETTER

#43: December 2021



Tīmatanga Hōu

new beginnings
CONFERENCE 2022



JOHN MCGLASHAN COLLEGE
ŌTEPOTI | DUNEDIN 8,9,10 JULY

In this issue: Get all the news regarding the upcoming conference in beautiful Dunedin, a call for presenters, Drama NZ's new PCT and Mentorship programmes, all the great stuff happening at the branch level, and more!

Dramatic is proudly brought to you by:



Note From The Pres.

Kia ora e te whānau,

Can you believe that we can almost say goodbye to the 2021 academic year, and what a year it has been especially for those in the Upper North with over 100 days of lockdown.

I would like to acknowledge all our amazing kaiako who pivoted, persevered, created online content, kept their rangatahi engaged, and continued to see the possibilities of the light at the end of the tunnel.

Now it is time to consider what 2022 will look like - perhaps that may include some new learnings based on this crazy year.

Personally I am looking forward to some much needed whānau time and connections over the coming months under the summer sun, with far too many picnics on the beach, fish 'n' chips, and a few thirst quenching drinks.

Heoi anō tāku mō nāianeī,

Emma Bishop
President



2021 Executive Committee

PRESIDENT

Emma Bishop
President@drama.org.nz

VICE PRESIDENT

Annette Thomson
VicePresident@drama.org.nz

SECRETARY

Nick Meissel
Secretary@drama.org.nz

TREASURER

Cory Hare
Treasurer@drama.org.nz

PRIMARY REP

Judy Norton
Primary@drama.org.nz

Charles Bisley
CharlesBisley@drama.org.nz

Samantha Wehipeihana
SamanthaWehipeihana@drama.org.nz

Chelsea Cope
Marketing@drama.org.nz

Contact us

Email
Admin@drama.org.nz

Conference Committee
conference22@drama.org.nz

Mentorship Program
Mentorship@drama.org.nz

National FB
<https://www.facebook.com/DramaNewZealand/>

Primary Edition FB
<https://www.facebook.com/dramanzprimary/>

Instagram
[@drama_nz](https://www.instagram.com/drama_nz)

Conference 2022 – New Beginnings

Drama NZ Otago Southland Branch invites you to the
Drama New Zealand National Conference



Tīmatanga Hōu

new beginnings

CONFERENCE 2022

JOHN MCGLASHAN COLLEGE
ŌTEPOTI | DUNEDIN 8,9,10 JULY



This year's theme examines a fresh new start within the arts as we negotiate education during and beyond the pandemic, beginning with our new curriculum. Our logo represents our experience as a collective group, nurturing the new. Our conference will focus on:

- 🌀 The curriculum review and NCEA rewrite
- 🌀 Mātauranga Māori and cultural contexts
- 🌀 Recreating ourselves in a Post-COVID world
- 🌀 The weaving together of arts with health and wellbeing aspects to function well as arts educators

Conference registration fee is: Early Bird \$275 until 7 May. \$320 beginning 8 May. Conference starts with registrations from 12:00-2:00pm Friday 8 July with our official opening at 2.30pm. Friday includes our first keynote, exploring the Trades and a social time reconnecting with our drama whānau. Conference ends at 12.30pm Sunday 10 July.

More Details on Presenters and Conference Programme are coming soon! Stay tuned! In the meantime, you can reach the Conference Committee at Conference22@drama.org.nz.

Applications are now open for people wishing to present at the 2022 Conference.

The conference committee is open to traditional and alternate presentation ideas and formats. Formats could include:

- 🌀 60 minute or 90 minute workshops - Usually a practical workshop (we can discuss a double session if needed)
- 🌀 30 min paper - 20 minutes talk with 10 min Q&A (Usually a traditional paper delivery.)
- 🌀 Pecha kucha - 20x20 presentation format - 20 chosen images each for 20 seconds (you have 7mins to tell your story)
- 🌀 Panel discussion

Applications will close on 13th February. Please [Click HERE](#) to Apply.

Connect at Conference 2022
with a Trade Display



Timatanga Hōu

new beginnings
CONFERENCE 2022

JOHN MCGLASHAN COLLEGE
ŌTEPOTI | DUNEDIN 8,9,10 JULY



About Conference Expo

The Conference Trade Expo is located in the centre of the conference, along with registrations, and is where breaks normally occur. The EXPO provides a superb way to promote your products and services to proven buyers and network with a number of kaiako and education whanau from around Aotearoa.

In advance of the conference, we will be promoting your company in our newsletter and direct email about the conference, maximising your brand placement with Drama NZ members. If you would like to include a flyer, resource, or asset to be included in delegate packs, just let us know.

Pricing and Options

Manned Display

Be there in person to visit with customers and expand your reach. The exhibitor fee includes: drinks and nibbles Friday evening; morning tea, lunch and afternoon tea Saturday; morning tea and lunch Sunday for one staff member. Donated goods and / or services may be accepted in lieu of monetary payment. Please get in touch if you have something to offer.

\$175 for current Associate Members

\$250 for non-Members

\$325 includes your annual Associate Membership or Renewal

Additional Options

\$100 per additional staff member

\$60 for Conference Dinner Saturday evening, per staff member

Un-manned Display

Unable to attend in person? You can still be represented via an un-manned table set up and kept organised by our conference team throughout the conference.

\$100 for current Associate Members

\$150 for non-Members

\$250 includes your annual Associate Membership or Renewal

Find out more about Associate Membership:

<http://www.drama.org.nz/about-us/associate-members/>

Email conference22@drama.org.nz
To Reserve Your Spot Today!

Tautoko Kaiāko Drama NZ PCT Support Network

Drama NZ is excited to offer support for kaiāko tōmua whakaari, new and beginning Drama specialists in secondary drama departments.

This network will allow participants:

- a specific place to ask questions, share resources and belong, facilitated by an experienced secondary drama specialist
- to take part in Zoom sessions with guest speakers
- have online support and access to resources
- be part of a network of teachers who are beginning their journey as specialist drama teachers

The programme will run from Term 1 2022 through to Term 4 2022.

This is an amazing opportunity for support and networking throughout Aotearoa, led by Annette Thomson (Kaiwhakatautoko - Facilitator)

If you would like to register for this opportunity in 2022 please ask to join our Facebook Page: "Tautoko Kaiāko Drama NZ PCT Support Network," and email your details to: Annette Thomson pctsupportnetwork@drama.org.nz



Double-sided flats on wheels

Free standing doors

drama 
magic

Drama Magic Ltd is an Auckland based company specialising in the design, development and manufacturing on demand, of stage set components such as: free standing doors and windows, flats, bi-folds, double-sided flats on wheels, cube boxes, platforms, props and theatre stage sets.

Schools and theatre companies will appreciate our industry standard OSH compliant, wood-based construction, with matt paint finish. Ask us to provide you with a current price list and discuss your specific requirements before arranging a no obligation free quote for these and any other items.

' The risers, cubes and flats have made an enormous difference, adding a level of professionalism that positively affects the students level of engagement '

Nancy Fulford, Wellington East Girls College, September 2021



Single Flats



Cubes



Platforms

 info@dramamagic.com  www.dramamagic.com

Auckland Branch

We recently reached the milestone of day 100 in Lockdown, but now the end is in sight with our “freedom day” creeping ever so slowly towards us. As we look forward to wine with friends in the sunshine, closing our laptops for the summer, and farewelling the final students, we also have the space to reflect on what a hectic return to in-person teaching has been.

Most of us in Tāmaki Makaurau have returned to school in one way or another. The level three restrictions in our spaces have really tested our imaginations in creating an environment that resembles a normal Drama space. The students are tired, the year has been long. Hats off to the teachers out there that have made this happen and have pushed (or dragged, kicking and screaming) their students through to the end.

Our more formal workshops for term four were planning on going ahead, but alas... we adapt, we change, we move forward.

Drama NZ Auckland Branch was excited to offer **Primary, Intermediate and Lower Secondary Teachers a free Drama Workshop....** A Double Bill! We thank Chris Horne and Judy Norton for all the time they put in and we will reschedule it!

Our **Scholarship Workshops** moved online and although the turnout was small we thank Emma Gillies and Leigh Sykes for being there to answer questions and continue their support of our Auckland teachers still forging ahead with the exam.

Our **AGM** won't quite be the same as our traditional Beer and Banter vibe but the Branch's idea of a catered picnic was a great call and we are looking forward to seeing the faces of our colleagues before our Summer break.

As we head into the summer holidays we hope all our crew rest up and take the time to take a break. We applaud the Auckland teaching community and the work you have done throughout this ever changing year - you have balanced so much over this year to still be the people our tamariki turn to for consistency and support.

And to the branch and our honorary members (you know who you are!) that always step up when we call out to you - 'thank you' doesn't quite seem enough, but know you are appreciated!



Auckland Branch Info

AucklandBranch@drama.org.nz

Facebook: <https://www.facebook.com/groups/513523238796638>

Canterbury Branch.

As this year of Covid near-misses in Canterbury draws to a close, the Canterbury branch met for drinks. And a good time was had by all!



Our Teacher Only Days have once again not coordinated across the region. Canterbury region had theirs on 25th November and set up a Zoom session for members to check in and chat about new standards, curriculum, fresh ideas, and much more.

The Nelson Bays area TOD is on 3rd December and we have planned a get together at Nayland College for members from schools in the region to catch up, chat about their programmes and look ahead to 2022. We have two members who will be new to their schools and one member retiring. Mel Stewart is retiring from Waimea College after many years; Anton Bentley will be picking up her job. Tami Mansfield is a newly qualified teacher who will be joining Verity at Nayland College.

Two Canterbury members have been awarded lead roles for new Drama NZ pilot programmes: Annette Thomson will facilitate the PCT Support Network, Tautoko Kaiāko, and Verity Davidson will facilitate the Secondary Schools Leadership Mentoring Programme, Whakaruruhau i ngā kaiarāhi Toi Whakaari. We look forward to getting these exciting new initiatives off the ground!

Verity Davidson
Regional Rep : Canterbury Branch

Canterbury Branch Info

CanterburyBranch@drama.org.nz

Facebook: <https://www.facebook.com/groups/425374920934604/>

Massey Branch.

Well what a crazy end of the year it has been!

Firstly, well done to everyone who has stayed sane and got their students through another strange year.

There have been some exciting things happening in the Massey space, with the Hawkes Bay branch holding their Junior Improv competition. Four schools from around the region were involved: Karamu High School, Woodford House, Havelock North High and Napier Girls High School. After 3 tense rounds, Napier Girls won – Iggy the Improv Imp Trophy. Well done to all involved. Great creativity all round!



Some of our schools are currently underway with their preparation for their 2022 School Productions. PNBHS and PNGHS are currently rehearsing, *Oklahoma*.

Restrictions with the new traffic light system are going to have some implications on the bottom line for some shows, so if you are wanting to form a working group to support each other in this space, please email me samanthawehipohana@drama.org.nz and we will get a team together to support each other.

Finally, I am aware that we have not yet had the PD as promised. After speaking to the other Pod Leaders we decided that it was best to postpone this until early next year with the hopes that things will be a little more settled and everyone is refreshed after the holidays. So please keep an eye out in your inbox for a registration form in early Term 1.

For now, hang in there!

Whenever you find yourself doubting if you can go on, just remember how far you've come. Remember everything you have faced, all the battles you have won and all the fears you have overcome. Then raise your head high and forge on ahead, knowing that YOU GOT THIS!

MEDIAWEBAPPS.COM

Massey Branch Info

MasseyBranch@drama.org.nz

Facebook: <https://www.facebook.com/groups/1470960373227577>

Otago/Southland Branch.

Kia ora koutou from Ōtākou and Murihiku,

In conjunction with Drama NZ Otago Southland, University of Otago Theatre Studies Department, and Toitū Otago Settlers Museum we were lucky enough to partake in a practical face-to-face verbatim workshop under Level 2 conditions.

We spent the morning workshop unpacking Verbatim with Hilary Halba and Stuart Young, of the University of the Otago Theatre Studies Department.

Documentary or verbatim theatre is a major and extremely exciting type of theatre that has come to prominence internationally in the last 30 years. They pioneered the development of the genre in Aotearoa, creating a series of plays that have toured nationally: *Hush: A Verbatim Play about Family Violence*; *Be | Longing*, which explores immigrants' experiences of settling in New Zealand; and *The Keys are in the Margarine: A Verbatim Play about Dementia*. Their most recent experiments with verbatim theatre took the form of an immersive theatre installation – *Struggling with Lentils* – which took place over the two floors of Allen Hall in July 2021.

In this workshop we were introduced to the particular form of “Headphone” verbatim that Hilary & Stuart developed in staging their plays. We learned the technique requires careful observation and specificity – skills that are generally applicable to good acting – in relation to both voice and movement.

In the afternoon, we spent some time unpacking devising standard resources on the NZQA site, before a drop-in visit and kōrero with Charlie Unwin, the Dunedin Arts Festival Director, about next year's festival.



(Photo: Sara Sinclair, Toitū LEOTC)

***Ngā manaakitanga,
Kimberley Fridd, Chairperson & Regional Rep
Drama NZ Otago Southland Branch***

Site Specific Theatre - a closer look with Chris Manley

One of the most exciting Achievement Standards we have to offer our students is devising. It is an opportunity to develop critical thinking skills, explore problem solving techniques and construct and create a piece of drama.

Devising is also a wonderful vehicle, which enables the teaching of different drama forms to students. Two forms, which will inspire and

energise your students, are site-specific and immersive theatre.

Site-specific performance is nothing new. Throughout theatre history and across cultures, artists have experimented with non-theatrical spaces. Typically site-specific theatre also allows a degree of immersion, which will influence the type of experience audiences will receive.

Site-specific drama makes use of a location. A site can be almost anywhere you choose. Some thought provoking spaces are often found around schools not far from the drama studio. Perhaps an elevator, alley or green space. Others are further afield but well worth the investigation.

Dunedin's rich settlers' history abounds with great narratives. Many sources of knowledge are within walking distance of inner-city schools and these venues also receive classes from throughout the city and other regional areas.

Two institutions, which welcome students, are Toitu Otago Settlers Museum.

<http://www.toituosm.com/> and Olveston Historic Home <https://www.olveston.co.nz/>

Students are guided through two centuries of local history and by way of observations and candid conversations they can investigate and explore a range of topics.

The sets are already created, whether it is a replica of a 19th Century sailing ship or an authentic Edwardian drawing room. These spaces work extremely well not only to reveal historical facts but also an awareness and appreciation of the age and the people. Both these venues have trained teachers on site to support and advise students and help them prepare for their theatrical experience.

Chris Manley
Otago Southland Branch Secretary



Thanks to Aimee Hazlett (our Southland POD leader) for these photos of St Peter's College performance of 'Grease' from earlier in the year



Year 9 students at Gore High School wearing their masks created for their 'Māori myths and legends' performance.

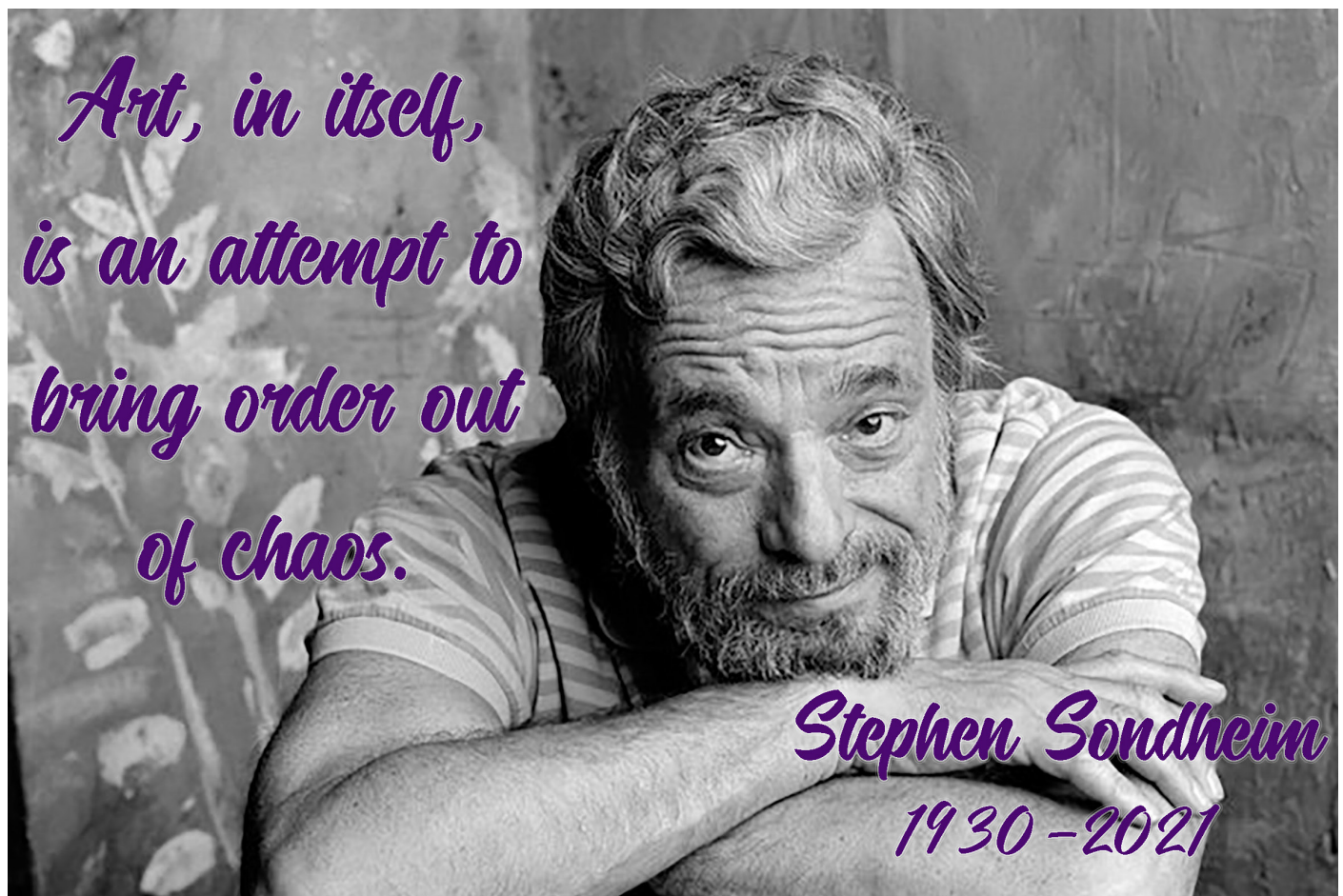
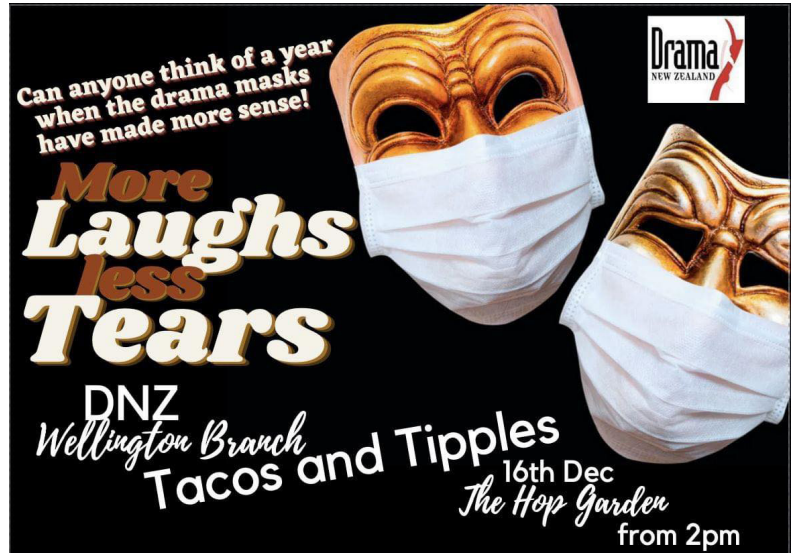
Otago / Southland Branch Info

Website: <https://sites.google.com/mcglashan.school.nz/drama-nz-otago-southland/home>

Facebook: <https://www.facebook.com/groups/dunedinramateachers/>

Wellington Branch.

Hark the herald angels sing.....
it's time we come together
and bask in each other's
awesomeness and resilience.
Please RSVP interest to
tamajoesmith@gmail.com and
you'll receive an event invite
and further details. It would, of
course, be magnificent to see
each and everyone of you!!



Wellington Branch Info

WellingtonBranch@drama.org.nz

Facebook: <https://www.facebook.com/groups/752422148201084/>

Waikato Branch.

Kia ora Waikato members.

This year we have struggled to gain traction and interest in having a branch for Waikato members. We attempted a meeting following the National Conference but only had three attend.

What does this mean for Waikato?...

Presently there has not been a branch AGM for two years. This means Waikato has missed gaining members capitation which is \$10 per member. Over two years that is close to \$1000.

It also means there has been no PD, workshops or networking within the Waikato region, although we are aware that a number of you have attended online opportunities, which we appreciate.

Moving forward we are keen to get the branch back up and running, but this requires volunteers. That means ***YOU!***

We know teachers are busy, but you know what they say - ***“Want something done? Ask a busy person!”***

We are looking for a representative from any sector from key geographic areas within the branch, possibly but not limited to: Hamilton, Tauranga, Gisborne, Taupo, Coromandel.

These representatives will then become the branch committee meeting a couple times a year to plan opportunities and manage the branch along with the help from the National Regional Rep Coordinator and National Executive.

Please email us at admin@drama.org.nz if you are able to be involved.

The National Executive have their fingers crossed!!





Primary Corner



An new and exciting initiative is our Podcast series '**Conversations with....**' hosted by Juliet Cottrell. The first in the series was **Conversations with Dr Julie Dunn**, from Griffith University, Australia. "De-mystifying Process Drama in the Primary Classroom."


If you use process drama, are interested in trying process drama, or are planning to write your own, I highly recommend this podcast. The discussion unpacks the pedagogy, identifying key elements and linking the conversation to other key educators in the field. Julie also provides useful references to books for further exploration.


Some of the takeaways from the discussion:

Considerations for planning and implementing process drama:

- » It should be driven by dramatic tension – the 'what's up?'
- » Remember about linking to and think about the curriculum and the broader curriculum, including key competencies.
- » Vital to have a pretext/stimulus
- » What are the roles in the drama?
- » Know your elements
- » Multiple opportunities to reflect

The second in the series is **Conversations with Patrice Baldwin**, which is taking place Wednesday 1 Dec at 8pm. Patrice is a leading process drama educator and classroom practitioner who has conducted fabulous and insightful workshops around the world. This conversation will be up in the members only area of Drama NZ's website in the next few weeks.





Drama for Writing in the primary classroom

A conversation with
Patrice Baldwin

Via zoom

8pm

Wed 1 Dec, 2021

Patrice is an internationally acclaimed teacher, trainer and author in the field of 'Drama for Learning'. She is a Director of the UK's Council for Subject Associations and during 2020/21 was Subject Leader for Primary Drama, for the Oak National Academy, (providing a Primary Drama curriculum and national online Drama lessons for teachers and children learning at home). She was Chair of National Drama for 11 years (until 2015) and President of the International Drama Theatre and Education Association (IDEA) from 2010-13. She has also worked as a primary headteacher, Local Authority School Improvement and Arts Education Adviser, a school inspector and a national curriculum Drama Editorial Expert for England. Her most recent book is 'Process Drama for Second Language Teaching and Learning' (pub: Bloomsbury, October 2021).

Secondary Leadership Mentoring Programme is Taking Shape

This new initiative aimed at supporting new HODs / TICs or Sole Charge Drama teachers is off to a good start.

We have had several applicants keen to be a part of this exciting opportunity. Each mentor will have 2 people to mentor for the whole of 2022.

We have five experienced mentors who are ready and willing to get started in the new year. They are:



>**David Chambers**, Life Member of Drama NZ and recently retired Head of Drama at Christ College, Christchurch, with more than 35 years of experience

>**Lisa Simpson**, Life Member and Head of Drama at New Plymouth Girls High School, with more than 27 years' experience

>**Merrin Diack**, Learning Leader of the Arts at Rolleston College, Christchurch, with more than 12 years' experience

>**Shaun Edwards-Brown**, Head of Drama and Dance at Cashmere High, Christchurch, with more than 15 years' experience

>**Nicole Eichstaedt**, Head of Drama at Baradene College, Auckland, with 8 years' experience leading Drama and Dance.

Since we had more applicants than available roles, there may be some disappointed applicants, but they will hopefully be able to apply again for 2023. This is a pilot programme and, if successful, will continue beyond 2022.

Our first meeting as a whole group will be before school starts in January so that the mentees have an opportunity to identify what they need help with right away. There is an exciting programme being developed for 2022 for both the mentors and their mentees which will involve Zoom sessions and face-to-face meetings with each other and leaders in the field of education, Drama and leadership.

Verity Davidson

Tūā Pā (Facilitator)

Whakaruruhau in ngā kaiārahi Toi Whakaari

APPLY

2022 REGISTRATIONS

OPEN NOW!

DUNEDIN WELLINGTON

stage
antics

SUMMER PILOT
PROGRAMME



MUSIC THEATRE
INTERNATIONAL

Our friends at StageAntics are thrilled to again bring this amazing opportunity to Aotearoa.

Young rangatahi aged 11-18 years will spend a week working on a yet to be released Broadway JR. musical this Jan in Ōtepoti and Poneke.

Leapin' Lizards ... what an opportunity!

Register now for the StageAntics Summer Pilot Programme in association with Music Theatre International - Australasia.

It will be an amazing week of developing your musical theatre craft with industry professionals so register now and add it to the presents under the tree this Christmas!

Individuals [register by clicking here.](#)

Nominators can [complete their forms here.](#)

Check it out at www.StageAntics.nz



Stage Adventures: Eight Classroom Plays

This collection of eight wildly diverse and entertaining plays for children by Richard Finn, Holly Gooch, Philippa Werry, Mark A. Casson, Michelanne Forster, Leilani Unasa, Stephanie Matuku and Claire Ahuriri-Dunning is perfectly pitched to unleash your imagination and take you on your own stage adventures.

Published. \$27.

Gillian: Dog in the Big City

by Kieran Craft and Jonathan Vanderhoorn (2-3w, 4m)

Winner - Plays for the Young 2021.

Gillian the Dog is having the best summer ever, running around playing with her best friend Rolf the Human. But one day Rolf leaves without warning, going to some mysterious place called "school". With the help of fellow pets Orlando the Bird and Mitzi the Cat, Gillian tracks Rolf all the way to the Big City, willing to undergo any trial it takes to reunite her with her best friend.

The Taniwha Who Had No Tail

by Willy Craig Fransen (2w, 2m, 2 any)

Manaaki, the pōtiki in his taniwha family, is sad that he cannot find his tail, so he embarks on a quest to find a cup that will grant him three wishes.

Contact Nathan Mudge
nathan@playmarket.org.nz
for perusals, advice and
recommendations.

HE RŌPŪ TAUTOKO TITO
WHAKAARI O AOTEAROA
PLAYMARKET
AGENT. ADVISOR. BOOKSHOP

Badjelly the Witch

by Spike Milligan. Adapted by Alannah O'Sullivan
(2-3w, 2-4m, 1-10 any)

Tim and Rose go off in search of their cow Lucy who has been stolen by the wicked Badjelly and her giant servant Dulboot. On the way they meet many characters including Binklebonk, Silly Sausage, Mudwiggie and the very polite Dinglemouse who was once a banana!

Published. \$29.

The Blue Airplane

by Ben Anderson (10-25 actors)

A plane suddenly realises that it doesn't make sense that metal can fly and, with that self-doubt, begins plummeting to the ground. It's up to one of the passengers to save the day. This book is a 'graphic play' with lots of images for students to devise from.

Published. \$29.

Our World - It's All Right Here

by Tim Hambleton (6w, 8m, 2 any)

A Kiwi family of five go on a world tour. They visit many different countries and see some amazing things, but the children soon realise that whatever the world has to offer - it can be equalled or bettered right here in New Zealand. Meanwhile, two pandas escape from Berlin Zoo and follow the family on their visits.

**GREAT NEW ZEALAND
PLAYS
FOR INTERMEDIATES
AVAILABLE FROM PLAYMARKET**

DNZ News

Meet your new Tūā Pā and Kaiwhakatautoko

Here are two very recognisable faces with new leadership roles at Drama NZ. Annette Thomson is our Kaiwhakatautoko and facilitates the PCT Support Network, Tautoko Kaiāko. Life Member Verity Davidson is our Tūā Pā and facilitates the Secondary Schools Leadership Mentoring Programme, Whakaruruhau i ngā kaiarāhi Toi Whakaari.



“I am so pleased that I got this gig! To be able to work with a group of really experienced and inspirational drama mentors, and then to be part of a project to support new emerging Drama Education leaders is awesome! This project ticks all my boxes!” ~ Verity



“I am very excited to be facilitating the new PCT support network to learn, talk and share together with PCT’s. This new initiative is an exciting time for Drama NZ and I am looking forward to supporting PCT’s in their Drama journey.” ~ Annette

WRITERS WANTED 2022 DRAMA NZ PRACTICE EXAMINATION WRITERS

Apply now to be part of the 2022 writing panel as a paid contractor for all levels.

Email your CV with a covering letter including your past experience with NCEA, examinations and assessment.

NZQA experience is advantageous but not a compulsory component.

Applications close 20 December

DNZ News

Renew Your Membership Now and Roll Over to 2022!

If you haven't gotten around to renewing your Drama NZ membership yet, here is an excellent opportunity! If you renew now, your membership will roll over into 2022, giving you extra value for your budgetary bucks!



2022

WORKSHOP PROGRAMME

FOUNDATIONS 14-24 YRS
ESSENTIALS 20+ YRS
TEACHER WORKSHOPS

REGISTER NOW
massivecompany.co.nz

TEACHER WORKSHOPS

Professional development workshops for teachers and theatre practitioners.

HAMILTON: February 25
WELLINGTON: April 1
AUCKLAND: April 8
TARANAKI: May 27
HAWKE'S BAY: June 9

