

# Dramatic

**DRAMA NEW ZEALAND NEWSLETTER**

**#23 : Sept 2018**



**Welcome to this issue of Dramatic.**

**This month is the inaugural NZ Theatre Month led by Roger Hall.**

**NZTM aims to contribute to encouraging the presentation of NZ Theatre, and to raise public awareness of and**

**appreciation of it through the celebration and elevation of theatre throughout the month.**

**It is fantastic to actually see how much is happening around the country on all levels, schools, community theatre and professionally.**

**Check out <https://www.theatremonth.nz/> to stay up-to-date.**

**The new website is up and running and has seen a number of members joining or renewing their memberships via the online portal.**

**Also available via the web are this year's Drama NZ Examinations which again have had a huge uptake.**

**Both of these online options – membership and examinations – have taken away a vast number of hours of administration for our executive members which we are thrilled is working so well and allowing us to focus on other areas of development.**

**The website also has some fab new resources for members to download and use in their classroom practice. If you haven't checked these out log on now and have a look. We have a few more resources in finishing stages which will be uploaded shortly. We would love to hear what other resources you would like to see available via the members section**

**Planning for next years National Conference is underway and I would like to thank the Canterbury Branch for taking this on and for their work already. The theme is set as is the venue and the dates (see post later in newsletter) so make sure you put this in your diaries now.**

**We have some other very exciting projects on the go for our members to benefit from including a number of Primary/Intermediate based initiatives.**

**So I encourage you to make a cuppa, find a comfy chair and catch up on whats happening in Drama.**

**Happy reading.....**

**Emma Bishop**

**PRESIDENT**



**Create, Communicate, Educate**

## **2018 Executive Committee**

<b>PRESIDENT</b>	Emma Bishop embishopnz@gmail.com
<b>VICE PRESIDENT</b>	Kim Bonnington bonntastic@gmail.com
<b>SECRETARY</b>	Angela Clayton dramednz@gmail.com
<b>TREASURER</b>	Teresa Callaghan teresa.callaghan@green-bayhigh.school.nz
<b>PRIMARY REP</b>	Judy Norton judy.norton@saintkentigern.com
<b>REGIONAL REP CO-ORDINATOR</b>	Bianca Till Btill@katikaticollege.school.nz
<b>COMMITTEE</b>	Charles Bisley charlesb@kelburnnormal.school.nz Annette Thomson athomson@avonside.school.nz
<b>Drama NZ Email</b>	dramednz@gmail.com
<b>National FB</b>	<a href="https://www.facebook.com/DramaNewZealand/">https://www.facebook.com/DramaNewZealand/</a>
<b>Primary FB</b>	<a href="https://www.facebook.com/dramanzprimary/">https://www.facebook.com/dramanzprimary/</a>



# NORTHLAND / AUCKLAND

For information about the Northland Branch follow the Northland Branch Facebook Group at: <https://www.facebook.com/groups/331444900315666/>

For any information about the AKLD Branch please contact Auckland Regional Rep, Cherise Stone, [sto@gdc.school.nz](mailto:sto@gdc.school.nz)

or join us on our regional branch facebook page at: <https://www.facebook.com/groups/513523238796638/>

Drama NZ Auckland Branch ran a scholarship workshop for teachers and students on August 9th. It was fabulously facilitated by Annie Millard and was well attended.



The workshop is part 1 of 2, the second part will be held at Glendowie College, facilitated by Auckland Branch members and Glendowie Drama teachers on the 12th October - last Friday of the break.

In this workshop we will be clarifying their understanding of the assessment specifications and encouraging students to share pieces from all 3 sections with each other and teachers for peer feedback and critiquing. We are using a similar format to last year's successful workshop at Greenbay.

To register your students go to [https://docs.google.com/forms/d/1HHrL\\_Lw8na4ErrC-FvqBJaRubT-DaxLTlrlqrz98Vcc/edit](https://docs.google.com/forms/d/1HHrL_Lw8na4ErrC-FvqBJaRubT-DaxLTlrlqrz98Vcc/edit)



In term 4 we may be looking at a Primary new approach, "Making Connections", by going into school to reach those primary teachers more easily.

Our AGM will follow our annual "Beer and Banter" early December.

**Cherise Stone - Regional Rep**

Let us take on the ticketing, so you can focus on the *good stuff.*

## WE REDUCE HOURS OF ADMIN BY HELPING WITH:

- |               |                 |                 |
|---------------|-----------------|-----------------|
| ✓ Productions | ✓ Tours         | ✓ Centenaries   |
| ✓ Showcases   | ✓ School Balls  | ✓ Fundraisers   |
| ✓ Concerts    | ✓ Sports Events | ✓ Registrations |
| ✓ Workshops   | ✓ Reunions      | and more...     |

*plus* Talk to us about our  
**\$0 FEE\* OPTION**

*\*\$0 Fees to you for tickets priced \$19 or under, as well as heavily reduced fees on other ticket prices. Excludes tertiary institutions. T&Cs apply.*



**SCHOOL  
TICKETING  
THAT WORKS**

[schools@iticket.co.nz](mailto:schools@iticket.co.nz)  
021 TICKET (842 538)  
**ITICKET.CO.NZ**



# TOURING SCHOOLS 2018



SUITS  
YEARS  
5-10

Written by young people, for young people!  
Don't miss this exciting and innovative  
performance, we'll come to you!  
More information at [capitale.org.nz](http://capitale.org.nz)

**BOOK NOW!**  
**04 913 3742**  
[capitalebookings@experiencewellington.org.nz](mailto:capitalebookings@experiencewellington.org.nz)

PART OF  
 **experience  
Wellington**  
wellington museums trust

PRINCIPAL FUNDER  
**Absolutely Positively  
Wellington City Council**  
Me Heke Ki Pōneke

MAJOR FUNDER  
 **creative  
nz**  
ARTS COUNCIL OF NEW ZEALAND Te Ao Whakaputa

**capital** 

[capitale.org.nz](http://capitale.org.nz)

## WAIKATO

For any information about the  
Waikato Branch please contact  
Waikato Chair/Regional Rep Bruce  
Rawson - [b.rawson@stpauls.  
school.nz](mailto:b.rawson@stpauls.school.nz)

Follow the Waikato Branch  
Facebook Group at: [https://  
www.facebook.com/  
groups/401441810044321/](https://www.facebook.com/groups/401441810044321/)

### EXAM PREPARATION WORKSHOP

Sacred Heart Girls College in Hamilton  
Wednesday  
September 19 at 4pm.

\$20 for Drama NZ Members / \$80 for Non-members  
To register please email Zoe Vaile [zvaile@shgcham.school.nz](mailto:zvaile@shgcham.school.nz)

This will be followed by a social gathering at the Cook just  
down the road for those who wish to stay.

### SCHOLARSHIP WORKSHOP

We are also organising a Scholarship workshop for staff and  
students early in term 4 (date to be confirmed) in Hamilton.  
This will be run as a masterclass with students presenting  
prepared work for feedback..

Please contact Bruce Rawson at [b.rawson@stpauls.school.nz](mailto:b.rawson@stpauls.school.nz)  
if you are interested in this workshop going ahead.

### FUTURE PLANNING

The Waikato Branch are also keen to hear from you - please  
take 5 minutes to complete the google doc to help us planning  
for you in future.  
The link is <https://goo.gl/forms/odIwwIrnw6vQOPyT2>

Bruce Rawson  
Waikato Branch Chair / Regional Rep

Teacher?  
I prefer  
the term  
Educational  
Rockstar

“  
Good teaching is  
 $\frac{1}{4}$  preparation and  
 $\frac{3}{4}$  theatre.

GAIL GODWIN



On July 28, Hawke's Bay had their scholarship Drama workshop led by Karla Haronga, HOD Performing Arts from Feilding High School. This was an opportunity for scholarship students to explore scholarship exam expectations through activities and movement and also to get to know each other better.

## COMING UP

14-16 September: DARE TO DEVISE: 48 HOUR THEATRE CHALLENGE

Here in Hawke's Bay we are holding our inaugural 48 hour theatre challenge which will be held at Havelock North High School. Teams register in advance and then have from 4pm Friday 14th Sept until 4pm Sunday 16th Sept to create a 6 minute drama piece. We have some local drama specialists to adjudicate and give out special prizes. We are looking forward to seeing what the groups come up with. (Big thanks to Northland Youth Theatre for letting us use their logo and designs)

Emily Miller-Matcham



For any information about the Massey Branch please contact

Massey Regional Rep Daniel Betty -  
[danielbettynz@gmail.com](mailto:danielbettynz@gmail.com)

Have you joined the Massey Branch Facebook Group?  
<https://www.facebook.com/groups/1470960373227577/>



# DARE to Devise

## SEPT 14 15 & 16 2018

**Think you can create a drama performance in 48 hours?**

*Grab a group of students and give it a go!  
Teams have 48 hours to create, devise and perform  
an original piece of theatre.*

<b>STEP 1</b> Create a TEAM	<b>STEP 2</b> Choose a Team Leader & register	<b>STEP 3</b> Await further instructions	<b>STEP 4</b> 48 hrs to Devise	<b>STEP 5</b> Perform
				

For more information...

 **@daretodeviseHB**

**[www.dnzmassey.wordpress.com](http://www.dnzmassey.wordpress.com)**







For any information about the Wellington Branch please contact Regional Rep Kim Bonnington - [bonntastic@gmail.com](mailto:bonntastic@gmail.com)

or join us on our regional branch facebook page at: <https://www.facebook.com/>

As a follow up to various members' requests we are having a **Scholarship Drama** workshop for students and teachers on:

**Sat 22 September**

**10 am - 1pm** for Students. Cost \$30

**10 - 2pm** for teachers and byo lunch and chat/clarification after the students leave - \$20 for members \$80 for non members (membership included).

Morning tea will be provided.

Newlands College Drama Room (DPR)

68 Bracken Road Newlands

The students will be run through the specs and develop a good understanding of the brief and be shown an exemplar. Students will then:

- explore developing one of their pieces further.
- spend time improvising
- spend time justifying their choices.
- explore and make connections to practitioners.

Open to all students interested in the 2018 and 2019 Scholarship Drama exam.

Please complete the following form and return with numbers on or before Monday the 17th of September.

[https://docs.google.com/forms/d/1P7MiwoukoDGocFOdDFTn8XZrHLciVsi3VNfHHJ\\_YDJ8/edit](https://docs.google.com/forms/d/1P7MiwoukoDGocFOdDFTn8XZrHLciVsi3VNfHHJ_YDJ8/edit)

Any questions please don't hesitate to contact Jo Matheson [jmatheson@newlands.school.nz](mailto:jmatheson@newlands.school.nz) and do pass this on to others that may be interested.

You will be sent an invoice related to numbers that attend.

# ARE YOU LOOKING FOR THE PERFORMING ARTS STANDARDS?

There has been much discussion of late on Dramanet about the Performing Arts Standards which have been sold by NZQA to SKILLS ACTIVE (<https://www.skillsactive.org.nz/>)

To date Skills Active have not yet uploaded the Level 1 - 3 PATS to their website.

However, these can be found at:

<https://drive.google.com/drive/folders/14gCsjBTdKcRlwXTA2ujBYxJDOQOQe7Vz>

What does this change mean for us?

To date our understanding is it is business as usual however we will be following up with them in the next week to find out all the information regarding assessment, resources, qualifications etc

# Exam Revision Ideas

For many you will be prepping for your practice examinations and it isn't long before end of year NCEA exams roll around.

Here are a few of the ideas for fun physical revision shared with our President Emma Bishop during her Exam Prep Workshops

- Play "one sentence at a time" around the class to remember the production
- Create a visual storyboard of the production with freeze frames and tableaux
  - do character thoughts out loud / narrations
  - discuss characters use of techniques in that moment (BODY / SPACE)
  - discuss elements of drama in that moment
- Get the script and re-enact an important scene
  - discuss relationships
  - discuss moments of tension
- Hotseat students as the designer or director asking questions about the production
- Write a list of questions you would like the answers to and send it to the shows producer and request if the director or designer can answer
- Read reviews for the production you saw and discuss/debate if you agree or disagree / write own
- Recreate the context of the world of the play
  - Melodrama – have a garden tea party thinking about etiquette of the era
  - Commedia – set up a marketplace
- Visit a local museum or historical village – immerse yourselves in the context
- Go to a local costume hire and try on actual costumes – discuss layers / draw and sketch
- Do back to back one describes a person or scene or set – other draws what they hear OR one describes a characters techniques (Body – posture / gesture) other stands as they hear

Early in the term we held our best practice workshop with Angela Hodgkinson and Bridget Crooks.

The day was well attended and the workshop was very informative – on Devising and Theatre Form Standards. Thank you to Angela and Bridget for preparing and delivering this valuable workshop.



Unfortunately our Primary workshop on Literacy did not have enough participants to go ahead. Thank you to Ginnie Thorner for offering this workshop.

We are looking forward to our AGM on 17th September so make sure you add this to your already full planner.

Our conference committee is well underway with planning for hosting next years national conference here in Christchurch. We have been discussing how to make it uniquely Canterbury and are so looking forward to welcoming everyone to our part of the country in April 2019.

#### DATES TO PUT IN YOUR DIARY

**Court Theatre Dress Rehearsal** – meeting beforehand for catch up and drinks:

- Thursday 13th September - Mum's Choir by Alison Quigan

**AGM** – Monday 17th September details to follow....

For any information about the Canterbury Branch please contact Regional Rep Peter Rutherford - [p.rutherford@rangiruru.school.nz](mailto:p.rutherford@rangiruru.school.nz)

or join us on our regional branch facebook page at:  
<https://www.facebook.com/groups/425374920934604/>



**What is on offer:**

**Guest speaker – Michael Bell on the future of Theatre in Christchurch**

**Supper –Drinks nibbles**

**Come and find out what Drama NZ has been up to and plans for 2019**

**Connect with fellow Drama Teachers**

## MONDAY 17 TH SEPTEMBER CANTERBURY DRAMA NZ AGM 2018

Venue: Rangi Ruru Merivale Lane Theatre



**RSVP AND APOLOGIES TO**  
Annette Thomson  
chairperson

[athomson@avonside.school.nz](mailto:athomson@avonside.school.nz)

by 16<sup>th</sup> September



For any information about the Otago / Southland Branch please contact Regional Rep Kimberley Fridd - [kimberley@mcglashan.school.nz](mailto:kimberley@mcglashan.school.nz)

or join us on our regional branch facebook page at:  
<https://www.facebook.com/groups/dunedinramateachers/>

At the start of August, the lovely Kim Bonnington (current Vice President of Drama NZ and a curriculum facilitator in the Arts at Otago University Education Support Services) held an Externals Workshop at John McGlashan College for Otago and Southland drama teachers.

The workshop focused on how to prepare your students for the Drama Externals.  
We looked at:

- \* How to interpret assessment specs in order to look for potential questions
- \* Ways of working the practical components of the Theatre form internals with the literacy components of the externals
- \* Reading marking schedules and exemplars
- \* Using feedback, feedforward and self-assessment to differentiate your classroom

Otago and Southland teachers wish to thank Kim for her time and effort on this workshop.



We are ringing out the end of the term with an event celebrating New Zealand Theatre Month. Whakahari Whakaari is a collaborative event which will see local Dunedin high schools join for a one-off performance celebrating theatre from Aotearoa. Each group will perform a series of short scenes from the plays they've been studying in class or will present original devised works.

UNESCO Dunedin City of Literature is sponsoring the event and will be providing us with free goodies to giveaway during the night - as there will be an on-going NZ Theatre Quiz running in between each of the school's items. This will be an awesome night of entertainment - so we'd love to see you if you can make it! All proceeds from the koha at the door are going to the Hope Centre in Albion Place (Life Matters Suicide Trust).

In Term 4 we will be scheduling our AGM, so stay tuned for further details.

Nga mihi,  
*Kimberley Fridd*  
*Otago Southland Regional Rep & Chairperson*

DUNEDIN SECONDARY SCHOOL DRAMA STUDENTS PRESENT...



7PM TUESDAY 18 SEPT  
OTAGO BOYS' HIGH SCHOOL  
AUDITORIUM, DUNEDIN



Celebrate NZ Theatre Month with a night of entertainment inspired by theatre in Aotearoa. Entry is by koha (pay what you can) - all proceeds going to support the HOPE Centre in Albion Place.





**NZ  
Theatre  
Month  
September**  
theatremonth.nz



Mon 24 September, 7pm  
Tues 25 September, 7pm



The Napier Studio  
6a Hastings St, Napier

Tickets: \$12 and \$18 - Book: [www.thedramaworkshop.co.nz/habyt](http://www.thedramaworkshop.co.nz/habyt)

"Truth and dreams are always getting muddled"

At ATC we have Rendered during NZ Theatre Month, Award-winning New Zealand playwright, Stuart Hoar, unravels the complex moralities of modern war in this taut, torn-from-the-headlines thriller.

With two performances that schools can book for at school prices of \$17 per student and \$20 per teacher (1 teacher free per booking):

Ambassador Forum Performance  
Tuesday 25 September 7pm

School Matinee  
Wednesday 26 September 11am



Teachers can contact Nicole for bookings [nicole@atc.co.nz](mailto:nicole@atc.co.nz)

A five-day physical theatre intensive for artists & educators

**New Zealand**

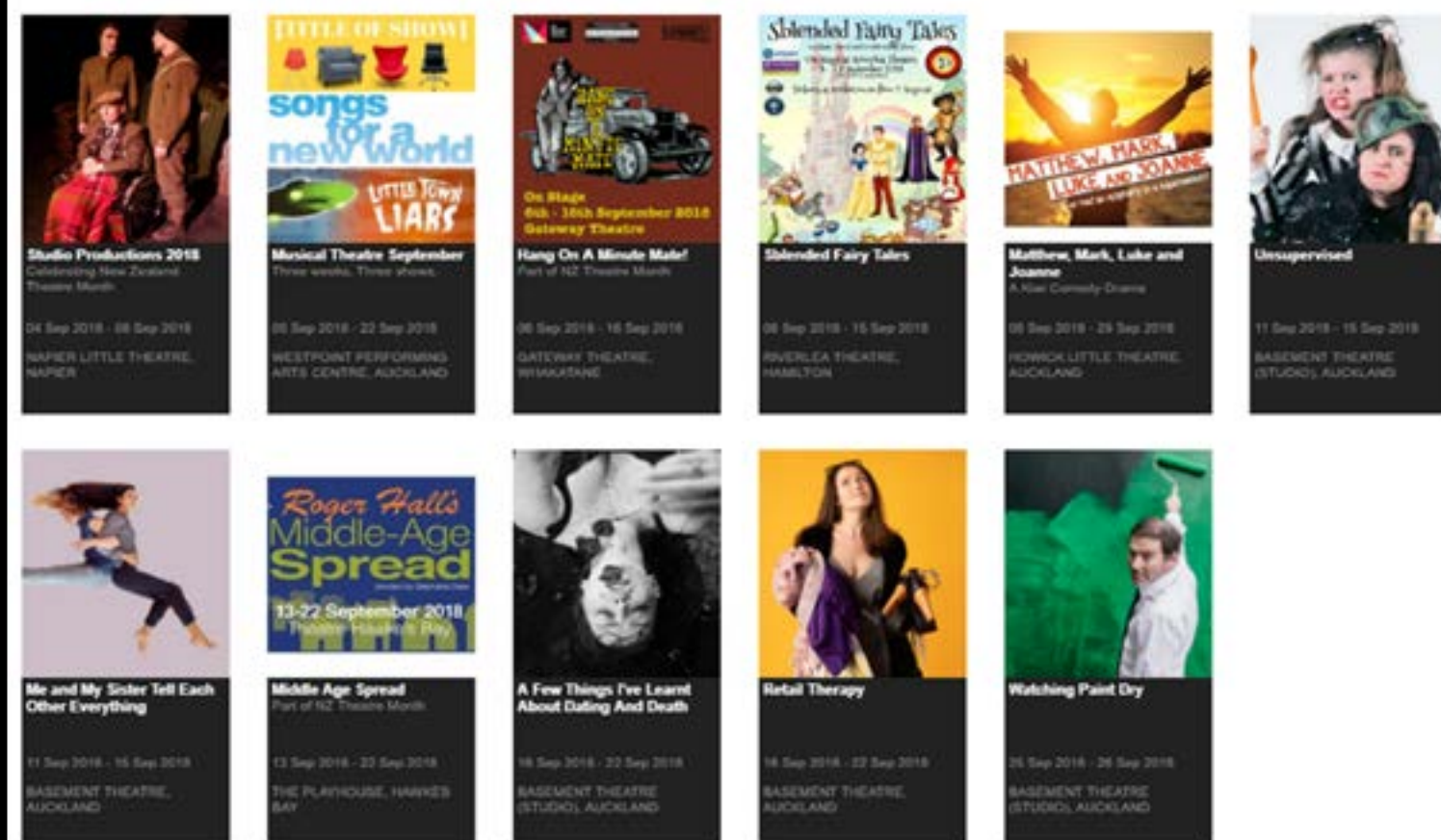
**STOMP**

Christchurch: 29 Sept – 3 Oct, 2018



CELEBRATING AND ELEVATING NZ THEATRE IN SEPTEMBER

Buy Tickets



**THE COURT  
THEATRE**



13 SEPTEMBER - 27 SEPTEMBER  
**THE COURT  
THEATRE IN THE  
SHELVES**



15 SEPTEMBER - 6 OCTOBER 2018  
**MUM'S CHOIR**  
WRITTEN BY ALISON QUIGAN



23 SEPTEMBER 2018  
**FEMALE  
PLAYWRIGHTS'  
FORUM**





From Primary Rep: Judy Norton



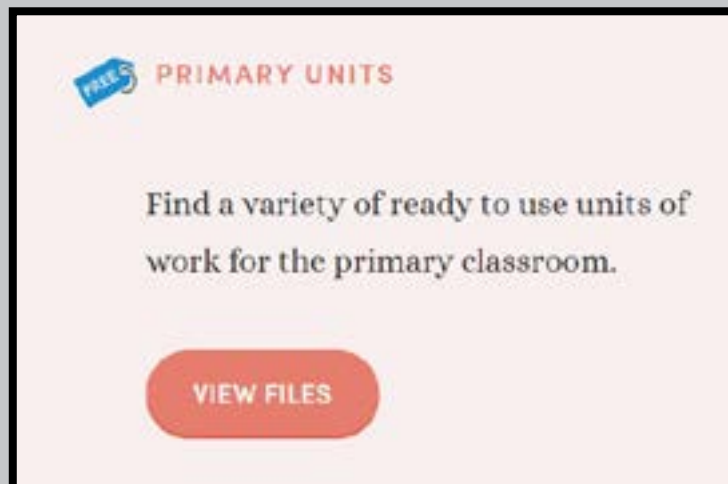
If you have anything you'd like to share in the Primary Corner, please get in touch with our Primary Representative Judy Norton [judy.norton@saintkentigern.com](mailto:judy.norton@saintkentigern.com).

Also make stay up to date by following us on the Drama NZ Primary Edition Facebook page: <https://www.facebook.com/dramanzprimary/>

## HAVE YOU CHECKED OUT OUR NEW PRIMARY RESOURCES?

### Primary Units:

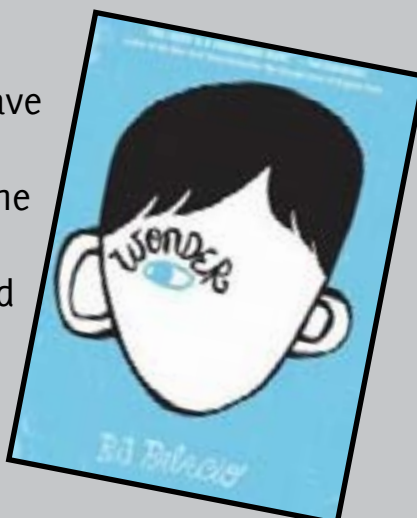
There are units for junior, middle school and-senior primary based on fairy tales, chapter books, sophisticated pictures books and movies



### Wonder Unit:

One of units on the website I have just completed with my Year 7 and 8 students. It is based on the book 'Wonder' by R.J Palacio. My students loved this book and exploring it through drama allowed them to delve deeply into the characters, their motivation and key events.

Our work culminated in the Year 7's writing and presenting monologues. The Year 8's devised scenes which were then presented as part of their Year 8 Oral Assessment.



### Also check out:

There are more primary resources in **Classroom resources**

- Audience Etiquette
- Drama Technique and Elements Posters
- Impro Starter cards

### Other resources:

- Assembly performance ideas
- How to run a Speech Competition

If you have any other suggestions for resources you'd like or use any of the resources and have any feedback, let us know.



Exposing students to the best live theatre is one of the big tasks facing any drama teacher. And sometimes tracking down the right theatre viewing opportunities for students can be a bit daunting to say the least! Not only that, but with often tiny budgets for live theatre opportunities, it can become a disaster if you book the wrong show. Ever felt that feeling as you watch a performance... "how on earth are my students going to write about this in their live performance external?!"

Over the years at NZ Playhouse, we've employed teachers, partners of teachers, actors who are now teachers, teachers who are now actors... we feel your pain! And because we've been there, we like to experiment and find the best ways to do things. We've been chatting to some of our teacher friends lately, and they've been telling us that it's a nightmare trying to find a good show to book for their students, and even if they do find one, they then have to spend hours trying to write resources that can make the show relevant to the NCEA drama standards. Not really what you need in a department that is often under-appreciated, under-staffed, under-paid... and school holidays? What are they?

That's why we're doing a few things differently for next year. Firstly, we're teaming up with the hilarious and award winning Dave Ladderman of Rollicking Entertainment, to tour a show that has already been proven to be a roaring success. We'll be touring "Battle of the Blaggards", which has already won Best Of The Fringe in Canada's Toronto Fringe Festival, and Critic's Choice at the World Buskers Festival. (By the way the show used to be called "Battle of the Bastards", but after consultations with teachers, we've renamed it for school audiences.)

Secondly, we're completely revamping the way we do our teaching resources. Written by teachers, for teachers, they will include the following:

Lists of activities organised into NCEA standards to make it super easy for teachers to use.

Drama activities that can be recycled by teachers and used over and over

Director's notes on technical aspects of the show - sound, costume, props etc. including how they can be used for the NCEA Live Performance standard

Notes on the playwright, Dave Ladderman, and his inspiration for the show, including connections with other practitioners/concepts

A professional quality video of the show so that you can watch again with your students and use for exam revision

Sixth and lastly ("Much Ado About Nothing" anyone?) we would love your feedback on any or all of our shows, proposed ideas, or things you would like to see from us. We love to learn, grow and adapt, so please do contact us with advice, ideas or anything else that you think might help us to make life easier for you







**New Zealand Journal of Research in Performing Arts and Education:  
Nga Mahi a Rehia no Aotearoa**

**Call for Submissions**

Drama New Zealand and The University of Canterbury welcome submissions for the 8th issue of the New Zealand Journal of Research in Performing Arts and Education.

This journal welcomes reports of research, including research by classroom practitioners, as well as scholarly discussions within the broad field of performing arts and education.

It aims to be accessible and useful to both academic researchers and classroom teachers

Articles may be 4000-7000 words and should be accompanied by a short abstract. Visual images may be included but should be attached as separate files.

APA referencing required.

Any inquiries about proposed submissions should be addressed to the Editor, and sent by May 15

**Submissions are to be sent to**

Professor Janinka Greenwood: [janinka.greenwood@canterbury.ac.nz](mailto:janinka.greenwood@canterbury.ac.nz)

**The New Zealand Journal of Research in Performing Arts and Education is an open-access peer-reviewed E-journal of University of Canterbury and Drama New Zealand**

<http://www.drama.org.nz/publications/>



**MASSIVE THEATRE COMPANY**

## **TEACHERS' WORKSHOPS 2018**

Led by Massive's Artistic Director Sam Scott, these workshops are designed for teachers of young people and theatre practitioners with a particular interest in devising theatre.

**CHRISTCHURCH  
DUNEDIN  
PALMERSTON NORTH**

**November 19  
November 20  
November 22**

**"If I could bottle up everything I've learned from these past days, and pour it over the drama kids at schools, the world would be a better place."**

TEACHER, 2016 CHRISTCHURCH WORKSHOP

**REGISTRATIONS NOW OPEN!**

<https://www.massivecompany.co.nz/workshops/teachers-workshop>



# Kenderdine electrical Ltd

Now Proudly Distributing



German Light Products is a leading manufacturer of cutting edge lighting technology equipment and has worked hard to become an established and respected brand. Known for their innovative and high quality intelligent lighting products, they have cemented themselves a position at the forefront of LED technology in the use of entertainment lighting for the professional lighting market.

Kenderdine Electrical Ltd is proud to announce they are the New Zealand distributor for GLP.

Known for their quality, reliability and design, the award-winning impression X4 series will make an excellent addition to the products already on offer from Kenderdine.

Phone: 09 302 4100 Email: sales@kelpis.co.nz

## NEW RELEASE....

### *Heavenly Bodies*

An award winning play about art, science, love and fate.

The Fates realise they have forgotten how to have fun. This is due to them becoming slaves to their work as they are now responsible for a human population of billions. In an attempt to reawaken their playfulness, the 3 sisters decide to make mischief like they did in the ancient times.

With the assistance of the dice, they select two teenagers who live in New Zealand. The dice also determines that one of these teenagers will experience unrequited love. The ensuing story follows Hugo James, a Kiwi boy who falls in love with an Italian girl named Verona di Lorenzo. To win Verona's heart Hugo must overcome the impossible obstacles that the supernatural sisters place in front of him.

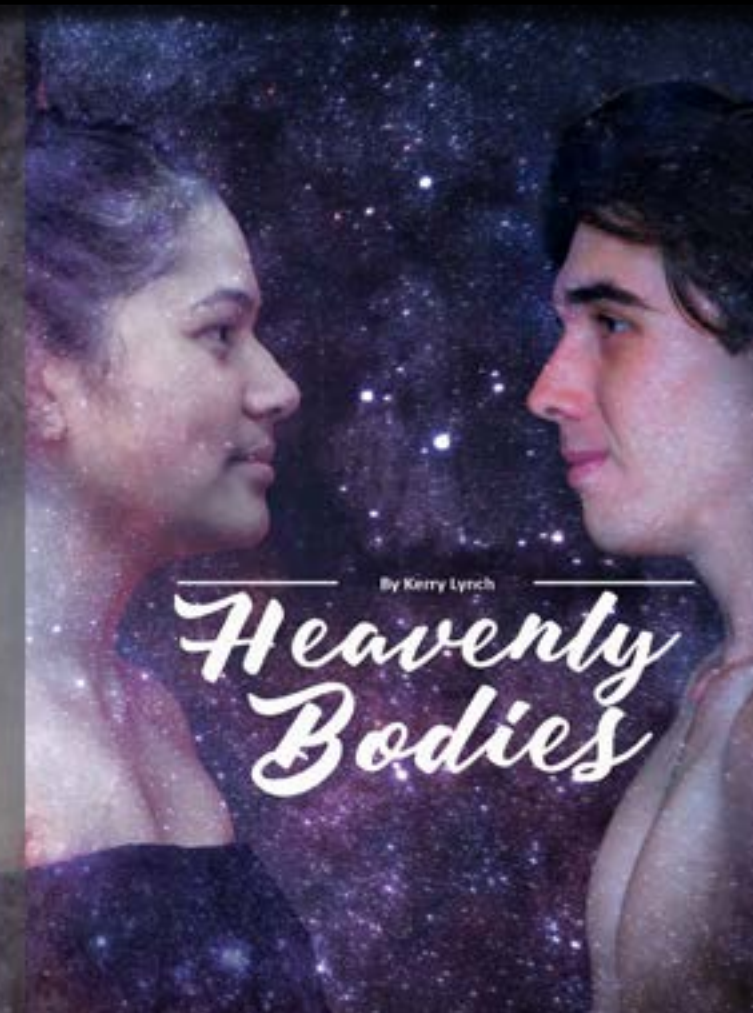
'Heavenly Bodies' is a modern love story that alludes to both Greek and Elizabethan theatre. It is also a comical and thought provoking commentary on love and what it means to be human.

Kerry Lynch is one of New Zealand's most successful playwrights for young people. As Head of Drama at Otahuhu College, Kerry has been able to combine his skills as a writer, director and educator to create many outstanding productions. In 2006 he received an NETA (National Excellence in Teaching Award) and in 2010 he was a Royal Society Fellowship recipient. Kerry has written two other plays for teenagers, 'Harbours Ghosts' 2011 and the award winning 'Dream Seer' in 2015. Kerry is a client writer with Playmarket.

Winner of the prestigious iTicket Showdown award for Best Production (Play or Musical) in 2017.

**SPLITSTAGE**  
PUBLICATIONS

ISBN 0000 978 0 473 43292 8



Following its award winning season last year Heavenly Bodies written by Kerry Lynch (Drama NZ Life Member, HOD Otahuhu College) is now published and available from Playmarket.

The play is a teenage love story that is both comical and often moving. It touches upon the subjects of great interest, such as how we need both art and science to make sense of this complex world. Like his previous plays he has also explored the place of mythology in contemporary society.

The play has been written to be studied in the classroom and obviously to be performed on the stage. Heavenly Bodies is a uniquely kiwi story and it is suitable for any N.Z. secondary school. The play is perfectly suited for NCEA in terms of the 'acting role' or 'drama techniques' standards offering a range of scenes for all gender groupings.

My students are really enjoying "Heavenly Bodies" and it has given them many creative opportunities, such as dance, commedia, gender swapping (they love that bit), music (the kiwi kind), Greek theatre just to name a few. It is written by a teacher with the curriculum in mind, but also for our youth.

**Samantha Boyce-Da Cruz -  
Linwood College CHCH**

Earlier this year we staged 'Heavenly Bodies' by Kerry Lynch and we loved it.

The chorus work was enjoyable and the humour, use of music & dance also allowed students to use their skills and perform in different arts areas.

The structure of the play as a whole was brilliant and suited our students and sustained their interest. It was also a pleasure to work with a play that has a contemporary NZ and teen focus.

**Tina Carlson  
Western Heights High School, ROTORUA**

## 2019 DNZ NATIONAL CONFERENCE

**April 12-14th April, 2019**

**Rangi Ruru Girls' High  
CHRISTCHURCH**



*Ka tipu te whaihanga  
Creativity will strengthen*





# ACTING AND SPEAKING

Qualification Specifications from 2017

## The specifications:

- Offer learners a range of performance opportunities
- Reflect what you teach and the way you teach it
- Give lots of guidance for teachers and learners

To find out more visit  
[trinitycollege.com/acting-speaking](http://trinitycollege.com/acting-speaking)



junior theatre  
new zealand



## Registrations are open for the JTCNZ PROFESSIONAL DEVELOPMENT PROGRAMME at JTCNZ18.

Our Professional Development Track as part of the Junior Theatre Celebration NZ 18 is the ideal way to explore, experience and empower yourself to produce a musical theatre production with your kids or simply come and see how it works before you, your school or theatre company try your own Broadway Jr Show!

You will immerse yourself in workshops, adjudications, and discussions while having fun with fellow teachers and directors whilst working with the iTheatrics team from New York.

We promise to leave you inspired and energized with new strategies and resources.

Saturday 2nd November  
St Cuthbert's College, Epsom, Auckland  
\$75

To register go to: <https://www.iticket.co.nz/events/2018/nov/junior-theatre-celebration> - click on individual registration and then Professional Development

*"you can expect fun,  
creativity, and a  
collection of wonderful  
ideas to take back to  
your classroom or studio"*

**Robert Dil**  
Performing Arts Teacher  
Takapuna Grammar School



FRI 2 - SAT 3  
NOVEMBER 2018



**TEACHERS  
ON TOUR**

**Professional  
Development  
Programme**

NYC - ATLANTA



TOUR 12 - 21  
JANUARY 2019



Want to find out what its like to be surrounded by 6000+ lovers of Musical Theatre?

Want to develop your artistic skills from some of the best?

Want the chance to meet and network with other like-minded teachers and artistic team members from around the world?

If you answered yes to any of these then this is for you!

What a trip!  
New York for workshops, shows and tours then onto Atlanta.. 8 days of none stop Music Theatre presented by Amici Trust's Junior Theatre New Zealand in association with iTheatrics, Music Theatre International - Australasia and Travel Gang.

Find out more at <https://www.amicitrust.org.nz/junior-theatre-new-zealand/teachers-on-tour/> or email [emma@nztheatrics.or.nz](mailto:emma@nztheatrics.or.nz)



# BASEMENT<sup>®</sup> THEATRE

## IAMBIC PENTAMETER IS NOTHING SACRED



### THIS WORKSHOP LOOKS AT SHAKESPEAREAN LANGUAGE

Ideal for students and teachers working on Shakespeare

Facilitated by Ash Jones and Arlo Gibson

Bookings: ashmarjones@gmail.com

Price: \$160

Duration: 2 hours

Participants: 15-30



### 2018 Drama NZ PRACTICE EXAMINATIONS

Available for Drama NZ members only via the members shop on our new look Drama NZ website NOW.

All 2018 financial members should have received an email with their new username and password. If you haven't please email us and we will sort for you.



Platforms



Cubes



Single Flats



Double-sided flats on wheels



Free standing doors

drama<sup>★</sup>  
magic

Drama Magic Ltd is an Auckland based company specialising in the design, development and manufacturing on demand of stage set components such as: free standing doors and windows, flats, bi-folds, concertina flats, double-sided flats on wheels, cube boxes, platforms, props and theatre stage sets.

Schools and theatre companies will appreciate our industry standard OSH compliant, wood-based construction, with a theatre matt paint finish. Ask us to provide you with a current price list and discuss your specific requirements before arranging a no obligation free quote for these and any other items

*Thank you so much for your time, effort and amazing communication to deliver incredible staging to us!*

*Merrin Diack, Rolleston College, January 2017*

**e** [info@dramamagic.com](mailto:info@dramamagic.com)

**w** [www.dramamagic.com](http://www.dramamagic.com)



30th Nov -  
2nd Dec  
2018

# CONTINUUM



DRAMA EDUCATION:  
PAST PRESENT AND FUTURE

**Drama Australia  
National Conference**

